

**Mission Statement**

The Second Mile challenges young people to achieve their potential as individuals and community members by providing opportunities for them to develop positive life skills and self-esteem as well as by providing education and support for parents and professionals addressing the needs of youth.

**THE SECOND MILE ANNUAL REPORT 2005**

## When Help and Hope Are Needed, You Are There



*President/CEO Jack Raykovitz, Ph.D.,  
and Board Chairman Bob Poole*

What a great year 2005 was for the children, youth, and families served by The Second Mile, and together with them, we offer you our thanks for making this wonderful year possible. For the first time in our organization's history, we served young people in every one of the 67 counties in the Commonwealth of Pennsylvania. While, in past years, there was always a county or two that received no services, thanks to the outreach of volunteers and staff, this year families and professionals in every corner of the Commonwealth requested our programs. This Annual Report provides a broad overview of the programs and services that your contributions provided this past year, but we thought we'd share some of the highlights here, including:

- The launch of our newest Friend Program, the first in the Southeast Region. Youngsters from Chester and Montgomery Counties benefited from new relationships and activities with their College Friends, student volunteers from Villanova University;
- Recognition by The Pennsylvania Association of Financial Student Aid Administrators (PAFSAA) as its designated charity for its statewide conference;
- Receipt of The Blue Ribbon for Kids Award, through a nomination by Berks County Children and Youth Services;
- The significant expansion of our Foster Family Program's foster parent recognition; and, most importantly,
- An increase in the number of children and families served in virtually all program areas!

That increase is important, not because we are a business seeking to show you, our stakeholders, a graph with a line that trends upward, but rather because children are our business, and this year, more than ever, youngsters and their families needed our help.

How tough is it sometimes for Second Mile kids and

families? This simple example might offer some insight: this summer, we received a call in our office from a single mom whose son had been offered the opportunity to attend our Summer Challenge camp, which, thanks to you and like all our programs, we offer at no charge to children and their families. She was calling to see what alternative route she might take to camp, other than the one we described in our invitation, because she couldn't afford the \$1.80 each way in turnpike tolls along with the higher gasoline costs. We provided the support needed for her son to get to camp, but this mom's plight demonstrates how Second Mile families are often impacted more than others by difficult times.

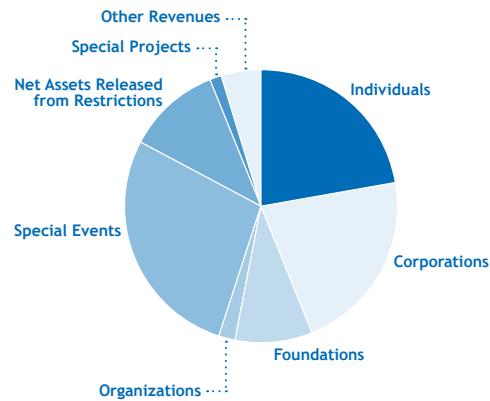
You are what makes possible our positive response to this mom's plight and our response to the needs of other families. With your choice to support The Second Mile, you have chosen to act on behalf of children in need rather than watch helplessly as disaster unfolds on television. You have chosen to provide help and hope and opportunity for youngsters who need your support. As we unveil two new giving societies in this Annual Report, The Angel Society for annual contributions and The Arthur C. and Evelyn M. Sandusky Society for estate gifts, we thank all of you who are walking "the second mile" with children today and all those who are ensuring that The Second Mile will be there tomorrow to provide help and hope.

Sincerely,

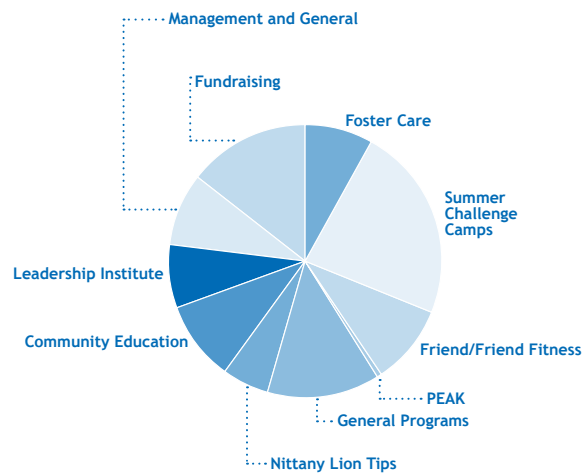
Bob Poole  
*Chairman of the Board*

Jack Raykovitz, Ph.D.

## Revenue



## Operating Expenses



## Statement of Revenue and Expenses, & Changes in Fund Restrictions

### REVENUES

Individuals		\$595,995
Corporations		569,842
Foundations		241,528
Organizations		52,557
Special Events	Income	\$ 1,124,276
	Expenses	\$ 387,651
		736,625
Special Projects		40,473
Other Revenues		120,449
Net Assets Released from Restrictions		293,000
<b>Total Revenues</b>		<b>\$2,650,469</b>

### EXPENSES

Community Education	\$202,971
Foster Care	173,335
Friend/Friend Fitness	200,461
Fundraising	304,642
General Programs	281,016
Leadership Institute	163,717
Management and General	185,146
Nittany Lion Tips	120,589
Prevention: Education & Awareness for Kids (PEAK)	17,491
Summer Challenge Camps	496,987
<b>Total Expenses</b>	<b>\$2,146,355</b>

### FUND RESTRICTION CHANGES

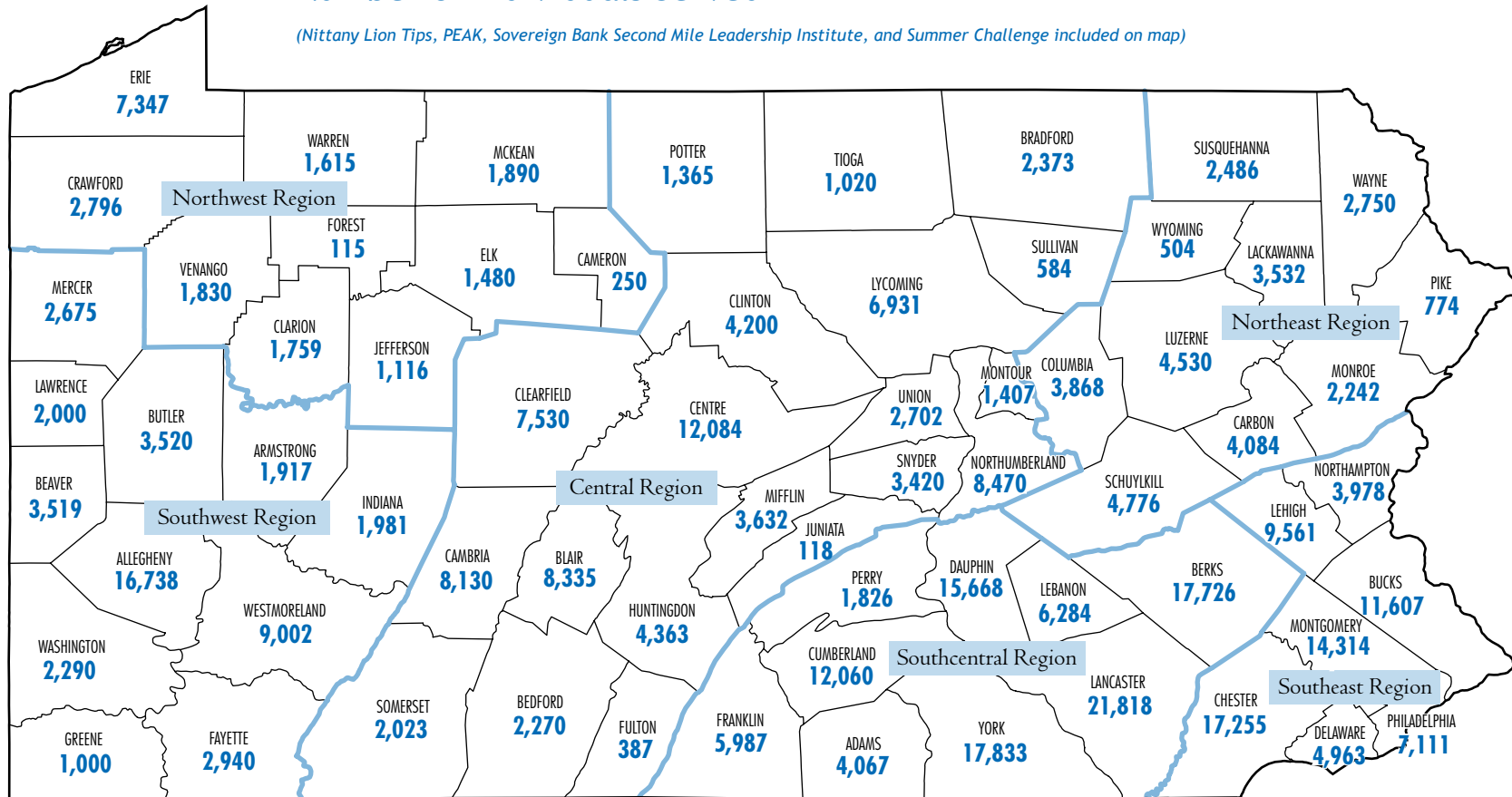
Contributions	\$1,678,629
Net Assets Released from Restriction	(293,000)
	<b>\$1,385,629</b>

<b>INCREASE IN NET ASSETS</b>	<b>\$1,889,743</b>
<b>NET ASSETS, BEGINNING</b>	<b>\$3,643,108</b>
<b>NET ASSETS, ENDING</b>	<b>\$5,532,851</b>

# Programs and Services 2005

## Number of Individuals Served

*(Nittany Lion Tips, PEAK, Sovereign Bank Second Mile Leadership Institute, and Summer Challenge included on map)*



## Regional Program Services *(not included on map)*

### Central Region

- 363 Participated in Friend
- 64 Participated in Friend Fitness
- 30 Attended the Clearfield Day Enrichment Program
- 913 Participated in Foster Family activities
- 187 Received Children's Fund awards
- 78 Attended 504 Counseling Sessions

### Southwest Region

- 5 Received Children's Fund awards

### Southeast Region

- 55 Participated in Friend
- 47 Participated in Friend Fitness
- 106 Participated in Foster Family activities
- 27 Received Children's Fund awards

### Northeast and Northwest Regions

- 733 Participated in Foster Family activities
- 33 Received Children's Fund awards

### Southcentral Region

- 93 Participated in Friend
- 2,750 Participated in Foster Family activities
- 44 Received Children's Fund awards



This year, I've spent a lot of my time doing two things—working with adults who care about Second Mile children to raise funds for our programs and working with the children who then benefit from those programs! Both types of experiences have made this a memorable year.

In addition to trying to meet directly with as many individual donors as I could this past year, I had a great time working with groups of Second Mile volunteers, like the leaders from Southwestern Pennsylvania who joined with us to host a new golf tournament, the "Pitt vs. Penn State Challenge." Like so many other volunteers, these leaders came together to support the youngsters that The Second Mile currently serves and to provide a foundation for organizing this region further so that more children may be helped. As do all our other Special Events Committees, whether golf tourney, banquet, auction, or drawing, this group worked tirelessly along with staff to produce a memorable event for their fellow donors, yet they always kept their focus on what matters most—Second Mile kids. Through volunteers and staff maintaining this focus on the most important bottom line—the children we serve—I'm pleased to report that The Second Mile was very successful this year in limiting our fundraising expenses to 12 cents of every dollar raised. That's a great record! I look forward to continuing meeting and working with donors this year to maintain that record and to sustain and expand the programs we provide for children.

For the kids are what it's all about. I wish each of you could have the same opportunity that I have to meet with Second Mile kids and see the real difference you're making. You could meet the young man in our Friend Fitness Program who, for his high school senior project, organized a community talent show as a fundraiser for The Second Mile. You could meet the Sovereign Bank Second Mile Leadership Institute team members who have engaged practically their whole student body to improve their school atmosphere and physical plant. You could meet one of our Summer Challenge graduates who recently sent in a \$100 contribution to support current campers. These are just some of the youngsters in whose lives you have made a difference and who are now trying to make a difference for others.

That's the legacy of The Second Mile. It's your legacy, and for that, I thank you.

*Jerry Sandusky*

Jerry Sandusky  
Founder



## The Arthur C. and Evelyn M. Sandusky Society

With this Annual Report, we recognize and thank the inaugural members of The Arthur C. and Evelyn M. Sandusky Society—individuals who have made an estate provision for The Second Mile, or a planned or deferred gift commitment, regardless of the amount. These gift commitments could include a bequest in a will or living trust, designating The Second Mile as the beneficiary of a retirement plan, a charitable remainder trust, a gift of a life insurance policy naming The Second Mile as beneficiary, and/or the execution of an estate note.

- Anonymous
- Wendell and Linette Courtney
- Daniel and Kimberly Del Bright
- Robert Forbes
- Blake and Linda Gall
- Andrew Garban
- Ben and Robin Heim
- Bruce and Susan Heim
- Robert and Carol Herrmann
- Jack Infield
- Robert K. and Jean L. Kistler
- Ralph Licastro and Laura Reidy
- Brad and Susan Lunsford
- Bill and Amy Sue Martin
- Bob and Marilyn Mayer
- Fred and Joyce Nicholas
- Kim Ortenzio-Nielsen
- Mike Patrick
- Carol Pioli
- John R. Raykovitz and Katherine Genovese
- Neal and Linda Rhoads
- Jerry and Dottie Sandusky
- The Schreyer Foundation - William Schreyer
- Steve and Amy Seltzer
- Lance and Ellen Shaner
- Harold and Eileen Shaub\*
- Jack Shaub
- J. Lawrence and Molly P. Snavely
- Fred Strouse
- Mike and Lynda Sullivan
- Peter and Karen Weiler
- Verne Willaman
- David and Hollie Woodle
- \* Deceased

"Since planned giving is all about legacy—about choosing how we will touch the future after we're gone—I am appreciative of and humbled by the Board's recognizing my parents' impact on my life by naming our new planned giving society The Arthur C. and Evelyn M. Sandusky Society. I thank our inaugural members and hope that together, through the vision and generosity of a growing membership in this new society, we can ensure that The Second Mile will continue to offer children help and hope, today and tomorrow."

—Jerry Sandusky

## Statewide Program Service Totals

163,990	Addressed important issues through the <i>Nittany Lion Tips Program</i> *
190,755	Learned new skills through <i>PEAK Videos I or II or Play Kit I</i> *
511	Participated in safe activities with caring mentors through the <i>Friend Program</i>
111	Built outer strength and inner character through the <i>Friend Fitness Program</i>
707	Developed key skills and set personal goals through <i>Summer Challenge Camp</i>
30	Attended the <i>Clearfield Day Enrichment Program</i>
264	Learned leadership skills to heal communities through the <i>Leadership Institute</i>
298	Received critical support through the <i>Children's Scholarship Fund</i>
4,502	Enjoyed recreation and support through 61 <i>Foster Family Support</i> activities
78	Benefited from 504 <i>Counseling</i> sessions
142	Received <i>Guidance and Referral</i> information
413	Participated in <i>Professional Training</i> through 54 different sessions
10,437	Attended 122 <i>Community Education</i> presentations

\* estimated number based upon counselor reports

## Prevention Programs Nittany Lion Tips

- With the cooperation of Penn State athletics, the two editions of Nittany Lion Tips were provided to nearly 164,000 elementary, middle, and junior high school students. More than 1,400 school counselors and other youth-serving professionals used the accompanying facilitator's guide and these cards, which offered motivational messages from 50 student-athletes, to address behavioral problems and offer an incentive for learning.

## Sovereign Bank Second Mile Leadership Institute

- With goals of promoting youth voice and building leadership capacity, The Sovereign Bank Second Mile Leadership Institute is an effective, student-centered approach to creating safe schools and caring communities. Our 6th annual conference hosted a record 43 high school teams representing the different factions within their high school communities. More than 50 presenters shared their knowledge and experiences in presentations ranging in scope from fundraising and publicity to group function and communication styles. Currently, the teams are leading fellow students in the implementation of their projects, which include mentoring and tutoring ESL students, providing orientation for incoming freshmen, organizing volunteer fairs, and promoting school harmony through such projects as beautification and construction of a gazebo.

*continued below*

"I am sorry to say that I am retiring at the end of this school year, but wanted to let you know that I believe your work is very important and much appreciated.

I give out the cards weekly to recognize kids for their good deeds and for meeting their goals. Hopefully, the new counselor will do the same. Keep up the good work!"  
—School Counselor from Cumberland County



*At the Leadership Institute, this group works as a team to build a sturdy bridge from newspaper.*



"I just wanted to take a quick moment to thank you for all of the hard work that you and the team did to provide such a valuable and motivating leadership conference! I can only imagine the preparation and the hard work that went

into making that entire time so successful. It was truly one of the best conferences I've been to in 10 years of teaching!"  
—Leadership Mentor from Lebanon County

## The Angel Society

*With this Annual Report, The Second Mile recognizes and thanks the inaugural members of The Angel Society—those individuals, organizations, corporations, and foundations that have made annual contributions to The Second Mile equal to or greater than \$2,000 during The Second Mile fiscal year, September 1, 2004, through August 31, 2005.*

"Years ago, a young man wrote to me thanking The Second Mile for being the 'wind beneath his wings.' His letter served as an inspiration in naming our annual giving society 'The Angel Society,' our way of recognizing the significance of our donors, who lift children up, show them new horizons, and provide them with the skills they need to soar."

—Jerry Sandusky

### \$50,000 and Above

Fox 43 Charities, A Fund of The Robert F. McCormick Tribune Foundation

Bruce and Susan Heim

\*Eileen Shaub

MBNA

The Schreyer Foundation

Lance and Ellen Shaner

Sovereign Bank

State Farm Insurance

Ric and Sharon Struthers

Verne Willaman

Clyde and Nancy Shuman and Precision Medical, Inc.

The Louis Silvi Foundation

Jim and Jeanne Swistock

Universal Media, Inc.

Walman Optical

Waste Management

### \$5,000-9,999

A.P. Lubrano & Company, Inc.

Aestique Medical Center

American Association of

University Women

Dennis and Michele Baltzley

Langholz Wilson Ellis, Inc.

Leitzinger Imports

M & T Bank

M & T Bank Charitable Foundation

Chuck and DeDe Markham

Donald and Renee Marks

George Middlemas

Nittany Beverage/Strickler's Ice

NRL Direct/NRL Brokerage,

A Stephen Bogner Company

NRT Incorporated

Michael and Beth O'Donnell

Judy Olian and Peter Liberti

P.J. Dick Incorporated

Paris Business Products

The Timothy F. Pasch

Family Foundation

Petroleum Products, Inc.

Reschini Group

Rider Auto, Inc.

Martin and Laura Riehl

Ronald McDonald House Charities of Central Pennsylvania

Seiple Family Foundation

Seligman, Friedman & Company

Aramark

Brad and Kelly Barter

Beard Miller & Co., LLP

The Blair Companies

Andrew Curt and Tracy Bryan

The Capital Group Companies

Charitable Foundation

Donald and Heather Carlino

Central PA Auto Auction, Inc.

Charles and Patricia Chubb

Citizens Bank

Cleveland Brothers Equipment

Company, Inc.

T. Neil Cocolin and Kathleen Backus

Coldwell Banker Homesale

Services Group

Cost Company

Charles Curley

Curves of State College

Lloyd Dahlem

William and Ranea Daugherty

Matthew and Rhonda DeRose

Drover's Bank, A Division of Fulton Bank

Gary and Julie Dubler

Duncan Financial Group, LLC

Josiah W. and Bessie H. Kline Foundation, Inc.

Thomas and Phoebe Knepley

KVF Associates, Inc.

L. Robert Kimball & Associates, Inc.

Land Displays

Jim and Deborah Landrigan

Leitzinger Imports

Leonard S. Fiore, Inc.

Hank and Karen Lesch

William MacNamara

Joseph and Catherine Makoid

William and Amy Sue Martin

MBNA Marketing Systems

McCormick Family Foundation

Edward McNeill

McQuaide Blasko

Mercer Human Resource Consulting, Inc.

Merck & Company, Inc.

Merrill Lynch

Miller Brothers Auto Sales, Inc.

National Penn Bancshares, Inc.

Nationwide Mutual Insurance Company

Robert and Kimberly Ortenzio Nielsen

The Novinger Group

### \$20,000-49,999

Anonymous  
Citigroup Foundation  
Ferguson Foundation  
Highmark Blue Shield  
Bob and Marilyn Mayer  
Pepsi Bottling Group-Altoona  
Anthony and Noreen Salvaggio and Computer Aid, Inc.  
S & A Custom Built Homes and Bob and Sandy Poole

### \$10,000-19,999

Baierl Automotive  
Chambers Environmental Group  
Dominion Foundation  
Frito-Lay  
Blake and Linda Gall  
The Hall Foundation  
The Hamer Foundation  
KPMG LLP  
Edwin and Lillian Krane  
Northwest Savings Bank  
PricewaterhouseCoopers, LLP  
Sheetz, Inc.

Broadcast Cable Media, Inc.  
Centre County Community Foundation, Inc.  
Clinton County Community Foundation  
Colonial Oaks Foundation  
Community Banks  
DeAngelo Brothers, Inc.  
Deloitte & Touche  
JoAnn DeRose  
Dick's Sporting Goods, Inc.  
Educational and Scientific Fund of the Simon Kramer Institute  
Gateway Financial Group, Inc.  
Jack Gaughen, Realtor ERA  
Global Energy Solutions  
Guthy-Renker  
John Hancock  
David and Lizabeth Hill  
The Hershey Company  
Matthew and Mary Johnson  
Keane Advisors LLC  
Dick and Sandy Kile  
Kohl Building Products  
Dallas and Di Krapf

Seltzer Partners  
Shaner Hotel Group  
Glenn and Marilyn Smith  
Snyder's of Berlin  
Snyder's of Hanover  
Student Book Store  
Tastykake  
TeaMac Inc.  
Matt and Becky Telpher  
Three Rivers Marine and Rail Terminals  
Turner Construction  
U.S. Smokeless Tobacco Brands, Inc.  
United Concordia Companies, Inc.  
United Parcel Service Foundation, Inc.  
United States Steel Corporation  
Utz Quality Foods, Inc.  
Varischetti & Sons, Inc.  
Chuck Wilcox  
Williamsport-Lycoming Community Foundation  
World Health Cares Fund

### \$2,000-4,999

A D Starr  
Ackman Ziff, Inc.

Merlin and Wendy Dunkelberger  
Duron Paints & Wallcoverings  
Elam G. Stoltzfus, Inc.  
First Commonwealth Bank  
First Energy Foundation  
W. Beall and Marlene Fowler  
The Gamber Foundation  
Drew Garban  
Giant Food Stores, LLC  
Gilbane Building Company  
Giorgio Foods, Inc.  
Pete and Sue Forster  
Doreen Glenning Management Consulting  
Graham Capital Company  
The Hankin Group  
Jeffrey and Rebecca Hartings  
The HDH Group  
Heritage Hills Golf Resort and Conference Center  
HOK Sport + Venue + Event  
Howard Hanna Real Estate Services  
J. Lloyd and Dottie Huck  
JLG Industries, Inc.  
Rick and Cindy Karcher

Ocean Spray Cranberries, Inc.  
Omni Plastics, Inc.  
PA Association of Student Financial Aid Administrators  
Parker Agle Enterprises, Inc.  
Penn National Insurance  
Pennfield Corporation  
Pennsylvania DUI Association, Inc.  
Pennsylvania State Association of Boroughs  
Richard and Lois Peterson  
Philadelphia Eagles  
PNC Bank  
Suren and Barbara Rao  
Jack Raykovitz and Katherine Genovese  
John Reidell  
Reliance Bank  
Resources Global Professionals, Inc.  
The Ressler Mill Foundation  
Restek Corporation  
Rhoads & Sinon LLP  
Dan and Nancy Ring  
Rotary Club of Altoona  
Rotary Club of Hanover  
Lester and Carol Rowell  
DrueAnne Schreyer and Rodney Frazier

## PEAK (Prevention: Education and Awareness for Kids)

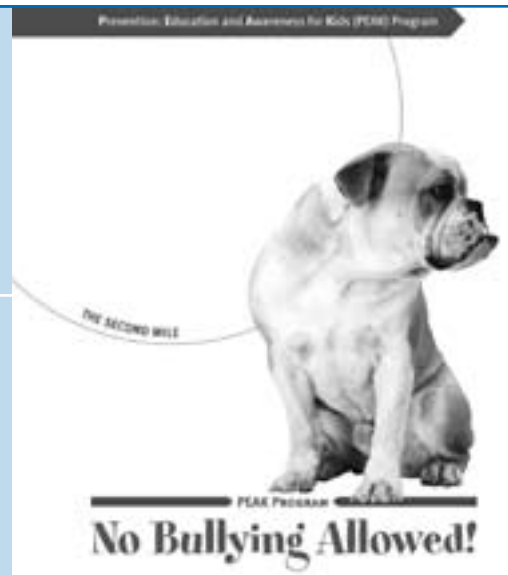
- Counselors across the Commonwealth continue to utilize all modules of the PEAK Program. The two video modules, *Choice of Champions and Flow: The River Within*, developed to help students respond proactively to negative peer pressure and improve their self-esteem, have been used by more than 1,100 school counselors since their release. The newest module, a play kit entitled *No Bullying Allowed!* that was first distributed last year, has been shared with elementary and middle school students by more than 300 counselors.

## Early Intervention Programs

### Summer Challenge

- The overall objective of the Summer Challenge camp is to provide an environment in which youngsters build the skills that they need for productive adulthood and develop better understandings of themselves and others. At each of the ten one-week sessions, campers set behavioral and academic goals and choose community service projects for the upcoming school year. To provide support for their efforts during the school year, The Second Mile makes written, phone, or in-person contacts with campers, their families, and their counselors and provides mid-year activities. This past year, those contacts numbered more than 18,000, including 28 mid-year activities.

*continued on the next page*



*We continue distribution of the third PEAK (Prevention: Education and Awareness for Kids) module, our first play kit, to many students throughout the Commonwealth*

*“Year after year, I continue to use the PEAK kit to teach my kids about bullying in the classroom, and they love it! I think acting out the play is a great way for kids to learn about bullying and how it affects them and other children around them.”*

*—School Teacher from Delaware County*

*“Thank you for providing children with such great programs. I have both modules and the PEAK kit, and my kids have enjoyed using them all.”*

*—School Teacher from Allegheny County*

"Thank you so much for providing this program for my children. I remember when they first started going to camp 5 years ago, and I have seen the impact that this program has had on them. I am so grateful that they have had the opportunity to come back year after year and that programs like this exist for kids who need them."

—Summer Challenge Camper Parent from Berks County



These two campers share a colorful smile after tie-dyeing at Summer Challenge

"Working with a variety of kids in the program has been an awesome experience. Having seen the impact that the Friend Fitness Program has on my mentees makes me excited for all the kids in the program now, because I know all the benefits that they will be receiving."

—Centre County Friend Fitness Mentor



This Friend Fitness mentor teaches his mentee to push himself to reach his goals.

### Summer Challenge continued

- With that support, youngsters meet their goals, earn achievement awards (recognizing school counselor reports of exemplary progress in school), and perform community service. This past year, 123 of our 2004 campers completed community service projects and school counselors nominated 605 for achievement certificates. During our 2005 camp weeks, our camp staff encouraged 707 youngsters to **TRY**, the theme of this year's program. With that same year-round support, we anticipate that those campers will experience success similar to our 2004 attendees.

### Friend Fitness

- The Friend Fitness Program provided opportunities for mental and physical improvement to 111 teenagers in the Centre Region and Chester County. The students were assisted by the volunteer efforts of 75 adult mentors who met with them during twice-weekly workout sessions. In addition to the twice-weekly sessions, students and mentors benefited from quarterly social and monthly recognition events, as well as quarterly mentor training on critical issues. Additionally, new mentors were trained to prepare for the launching of a new site in Clinton County at the start of this current academic year.

*continued below*

#### \$2,000-4,999 continued

ShIPLEY Energy  
 Harry K. Sickler Associates  
 State College Area High School Key Club  
 The John Frederick Steinman Foundation  
 Robert and Jeri Linn Stewart  
 Doug and Andrea Strang  
 Michael and Lynda Sullivan  
 Sunrise Homes, Inc.  
 Sweetland Engineering & Associates  
 K S Tooling, Inc./Ken and Patti Sweigart  
 Charles Telfer  
 Theta Kappa Pi  
 Universal Remediation, Inc.  
 Urish Popeck and Company  
 Visual Impact Productions, Inc.  
 Willard E. Campbell Enterprises, Inc.  
 Ruth Wodock  
 David and Hollie Woodle  
 Ronald Zimmerman

Barton Associates, Inc.  
 R. Clifford Berg  
 David and Mary Bernitt  
 Fred and Suzanne Biesecker  
 Bon Ton Stores Foundation  
 Ronald and JoAnn Bowes  
 Boyer & Ritter  
 Kirsten Braley  
 Michael and Barbara Brodsky  
 Buckno, Lisicky and Company  
 Byerly, Inc.  
 Capital Blue Cross  
 Robert Capretto  
 Caritas Foundation/Dominic Toscani  
 Chad and Jennifer Carlson  
 Century 21 Heritage Realty  
 Thomas and Kate Cestone  
 Charles Navasky & Co., Inc.  
 Chi Phi Fraternity  
 Choo Choo Barn  
 Coca-Cola Bottling Company of the Lehigh Valley  
 The Martin D. Cohen Family Foundation

Ellis S. & Company, PC  
 Emerald Advisors, Inc.  
 Kenneth and Susan Ewing  
 Ned and Christine Faust  
 Michael Fiaschetti  
 Financial House  
 First Affiliated Insurance Group, Inc.  
 First National Bank of Chester County  
 Rodger and Linda Fitzgerald  
 James and Jackie Ford  
 Joseph and Mary Franczak  
 Frost & Conn, Inc.  
 Lois Gable  
 Gary and Diane Heavin Community Fund, Inc.  
 Louis and Judy Geschwindner  
 Daniel and Joyce Gifford  
 Jim and Doreen Glenning  
 Karl and Mary Ann Glocker  
 Frederic Gover  
 Paul Graf  
 Roger and Valerie Grimes

Juvenile Detention Centers Association of PA  
 Laurene Keck  
 Keystone Real Estate Group  
 Tom and Staci Kirchhoff  
 Alice Kirchner  
 Kleinbard, Bell & Brecker LLP  
 Harry and Michal Kusick  
 Lancaster General Hospital  
 Landmark Communities, LLC  
 Edward and Susan Lauth  
 Robert and Lisa Leayman  
 Brian Lee  
 Lutron Foundation  
 Lou and Marge Mattioli  
 MBR Construction Services, Inc.  
 McClarin Plastics, Inc.  
 McClure Company  
 Crawford McFerran  
 Edward McGinley  
 Merck Employee Giving  
 MGM Enterprises, Inc.  
 Harry Miller

Frank Recupero  
 Reflections  
 Resnick, Amsterdam & Leshner, PC  
 Neal and Linda Rhoads  
 Ridgeview Limited Partners  
 Charles and Mary Rost  
 Dick and Carol Rostmeyer  
 Arnold Schumsky  
 Service Electric Cable T.V., Inc.  
 Steve and Nancy Sheetz  
 Mickey and Susan Shuler  
 Michael Sibol  
 Richard and Jeanne Singer  
 Smith Barney  
 J. Lawrence and Molly Snavely  
 Jack and Linda Sommer  
 Timothy and Suzie Spinosa  
 Ed and Janis Stewart  
 Fred Strouse  
 Stuckeman Charitable Trust  
 George and Grace Sullivan  
 Sunburst Property Management  
 The Sold Team of Century 21 Heritage Realty

**Additional Benefactors  
\$1,000-1,999**

A.W. Golden Cadillac  
Adhesives Research  
Air Products  
Marion C. Alexander  
Alexander Building  
Construction, LLC  
All4, Inc.  
The Allen Group/Brian and Anne  
Marie Allen  
Alliance Bernstein  
Allied Cleaning Technologies  
Altoona Mirror and EZ to  
Use Directories  
Ameron Construction  
Blane and Melinda Ampthor  
Louis Anastos  
Anonymous  
Apple Ford  
B T Group L.L.P.  
Babst, Calland, Clements and  
Zomnir, P.C.  
Bank of Hanover and Bank of  
Lancaster County

Community Banks, Inc.  
John and Karen Conroy  
Wendell and Linette Courtney  
C-P Flexible Packaging  
Salvatore and Nanette Cutrona  
D & E Communications, Inc.  
D. W. Miller, Inc.  
D.C. Goodman & Sons, Inc.  
Damon's Restaurant  
Ernest Davis  
The 1994 Charles B.  
Degenstein Foundation  
Derry Presbyterian Church, Mission  
and Peace Committee  
Douglas and Helen Didyoung  
Diehl Motor Company  
DNB First  
Do It Outdoors, Inc.  
Dominion Matching Gift Program  
Greg Dubois  
Dudley Associates, LTD  
Mark and Deborah DuMars  
Ed and Connie Dunklebarger  
Elite Group LLC

Groundwater and Environmental  
Services, Inc.  
Stephen and Kathy Groves  
Michael Guman  
Gunn-Mowery LLC  
Harriet Hafler  
James and Carol Hanna  
The Hanover Shoe Farm Foundation  
Harrisburg Kiwanis Youth  
Foundation Inc.  
John Heim  
Benjamin and Robin Heim  
Bob and Carol Herrmann  
P. Douglas Hoke  
Houck Group, Inc.  
Howard Hanna Real Estate Co-  
Appraisal Services  
John Iannantuono  
Industrial Properties Group  
at NAI/CIR  
Jack Infield  
J. Ritchie Veterinary Hospital, P.C.  
Robert Jordan  
Martha Jordan  
David and Carol Joyner

Miller Chemical &  
Fertilizer Corporation  
D. Scott and Karen Mitchell  
Charles and Margaret Mogish  
National City Bank of PA  
Ray and Lynn Wood Neag  
Nittany Bank  
Omega Bank  
Omohundro Trust  
Oral and Maxillofacial Surgery, Inc.  
George and Barbara Parmer  
Timothy F. Pasch, Inc.  
The Patrick Organization  
Penn State Alumni Association  
Penn State Circle K Club  
Penn State Great Valley  
Penn State Milton S. Hershey  
Medical Center  
Pepper Hamilton & Scheetz LLP  
Philadelphia Turf Company  
Pinnacle Health System  
The PMA Insurance Group  
Pyramid Health Care, Inc.  
Frederic and Maria Ragucci  
Gary Raykovitz

Thorton-Tomasetti Engineers  
Tom Wentzel Company, Inc.  
The Tordon Group  
Tray-Pak Corporation  
Mick and Cheryl Trombley  
Trotter Fish, LLC  
Turkey Hill Dairy  
William and Estelle Turney  
David Udovich  
UGI Utilities, Inc.  
Unique Sports and Entertainment  
Marketing, Inc.  
URL Financial, Inc.  
USI  
Valley Preferred  
Michael and Celeste Van Belle  
Vinart Dealerships  
Vision Auto, Inc.  
W.E. Yoder, Inc.  
W.S. Lee and Sons  
Wachovia Bank  
John and Karen Walter  
Walters Appraisal Service, Inc.  
The White Rose Foundation

**Friend**

- The inauguration of a Friend Program in the Southeastern Region at Villanova University provided additional opportunities for elementary school students to benefit from participation in healthy and educational activities with collegiate mentors. During the past year, 46 activities were held at five sites—Penn State-University Park, Penn State-Altoona, Millersville, Lock Haven, and Villanova—where 511 Young Friends benefited from interaction with 413 collegians. More than 300 volunteers, both adult and student, assisted with these events.

**Community-Based Programs**

**Children’s Fund – Grants, Recognition, and Scholarships**

- To help children meet financial needs not covered by other agencies or government programs, the Children’s Scholarship Fund provides grants for items such as sports equipment and team registration fees, clothing, and field trips. This year, The Second Mile reached 71 young people through the grant arm of the Children’s Fund. In addition, the recognition and scholarship arms of the Children’s Fund honored 81 high school seniors and collegians with savings bonds and/or scholarships for exemplary community service work and provided college scholarships for an additional 32 Second Mile program graduates.

“My students love going to the Friend events during the school year, and when the program breaks for the summer, they can’t wait for September to come again so they can return. I appreciate the opportunities you provide for them since most of them don’t have a chance to participate in these types of educational and recreational activities otherwise. Keep up the good work, and thanks again for everything that your organization does for children!”

—School Counselor from Centre County



*A Young Friend stops to show off her painted face at the Carnival Event.*



“I would like you to know that I am deeply grateful for your decision to make me a Second Mile Scholar. Thank you for your trust and faith in my abilities; it means a lot to me to represent your organization in my search for knowledge at Penn State. Thank you, once again, for all of your life-changing help in both the mentoring and monetary contribution you’re providing me. I am

excited about college, and I owe a lot to your open-hearted contribution.”

—Former Friend Fitness participant

## Foster Family Support

- The Second Mile developed the Foster Family Support Program to assist Pennsylvania's Children and Youth Agencies in recruiting and retaining foster parents by offering recreational activities for families and providing tools for attracting new foster parents. This year, families in 26 counties benefited from 61 recreational events. Multi-county activities were held at HersheyPark, Lakemont Park, Knoebels, and Cherry-Crest Farm's Amazing Maze. As an additional aid to foster parent retention in numerous Pennsylvania counties, The Second Mile recognized foster family service milestones with support from Hoss's Steak and Sea House.

## Counseling and Referral

- This service assists both children and families who need outside support for problems or concerns. In 2005, The Second Mile was able to provide 504 counseling sessions from the State office as well as refer 142 others throughout the Commonwealth to needed services.

*This foster family takes a break from their busy day at Lakemont Park to enjoy lunch.*

"Just wanted to thank you for the wonderful summer you gave our family. We had a great day at Knoebels, watched the Reading Phillies win, were entertained



by a wonderful, funny play at Allenberry Playhouse, and enjoyed Cherry Crest Farm in September! Thank you, thank you for allowing us to go places we would not be able to go otherwise. Our thanks and appreciation to all those who contribute time, money, and creativity."

—Berks County Foster Family

Ben and Shelley Williams  
WPMT TV FOX43  
York Children's Foundation  
Richard and Nancy Zimmerman

### \$500-999

Abel Construction Co., Inc.  
Aggregates Equipment, Inc.  
Agostinelli Family  
Chip Aikens  
Douglas and Patricia Allen  
American Guaranty & Trust Company  
Anthony Anastos  
Richard and Kathleen Angstadt  
Anonymous  
Aon Consulting  
B.F. Brown & Company, Inc.  
Gregory Beears  
Steven and Dorothy Belinski  
Berks County Chapter of PSAA  
Berkshire Psychiatric & Behavioral Health Services, P.C.  
Frederic Beste

Emmanuel Dimitriou  
David and Tina Dix  
Leo and Lois Doriguzzi  
J. Glenn and Helen Ebersole  
Robert and Judith Ecker  
Suzanne Edwards  
George and Barbara Edwards  
William and Carla Edwards  
Tom and Katie Ellis  
Robert Emert  
Paul and Susan Emmerling  
David Englehart  
Environaire Corporation  
Todd and Julia Erdley  
Esskay Meats, Inc.  
Gregory and Nicole Famiglio  
Lee and Claudia Fanning  
Mark Fouchet  
Fasnacht Family Foundation  
Jeremy Fegert  
George and Mona Ferris  
First Generation Video Productions, Inc.

HealthAmerica  
Heck Bros., Inc. Florists and Gifts  
Jeffrey and Lisa Heimer  
I. Louise Helman  
Hempt Brothers, Inc.  
Terry and Nancy Hendricks  
Steve and Ricki Hevner  
John and Maria Hoffer  
Daniel Holland  
Home Source Mortgage Corporation  
Martha Hostetter  
Michael and Elizabeth Huegel  
Hydroworx International, Inc.  
Ethan and Nikki Imhoff  
Intercounty Mortgage Network, Corp.  
J.E.B. Environmental Technologies, Inc.  
Millie Jeffries  
Jeras Corporation  
Dan and Nancy Jones  
William and Susan Justice  
Alexander and Jane Kalenak  
Kampel Enterprises, Inc.

Lock Haven University Cross Country Team  
Brad and Susan Lunsford  
Paul and Helen Lyons  
Betsy Madden  
Jerry Maida  
John and Elaine Matternas  
Charles Mazza  
Marc and Denise McCann  
John and Denise McCarthy  
J. Matt McDonald  
MEPAC Match Program  
Craig Miller  
Rob and Kathy Moir  
\*Jacob Morrison  
Frank and Leslye Mosier  
David and J. Denise Moylan  
Tony and Dee Musso  
National Properties, Inc.  
Charles and Dorothy Neidig  
New Enterprise Stone & Lime Co., Inc.  
Tim and Nancy Niemann  
North American Communications

Harold and Shirley Salisbury  
Santee's Candies & Gifts  
Charles Sanders  
Jerry and Dottie Sandusky  
Jon and Kia Sandusky  
Ken and Joan Schleiden  
Kate Severs  
Scott Shamrock  
Matt and Andrea Shaner  
Jeff and Marsha Sharp  
Nancy Sheaffer  
Louie and Holly Sheetz  
Michael Sibol  
Scott and Christine Sides  
Sinderstahl, Inc.  
Michael Smith  
Jan and Carol Socket  
John and Marion Sroka  
Lewis and Susan Steinberg  
Stephen Watchorn Foundation, Inc.  
Suburban Stores, Inc.  
Sullivan's Moving and Storage  
Susquehanna Transit

Bieber Tourways  
 Walter and Tracy Bilski  
 Bollman Hat Company  
 Terrance Bowman  
 The Boyd Foundation  
 Bradford Coal Company  
 Brewery Products Co.  
 Russell and Sheri Brierley  
 Linda Brown  
 Daniel Byrd  
 Bob and Carol Campbell  
 Cynthia Campbell  
 CAN-AM Builders  
 Patrick and Kathleen Cataldo  
 Classic Harley Davidson  
 Karl Colyer  
 Conrad Siegel Actuaries  
 Converse Consultants  
 Tom Couch  
 Robert and Tina Crawford  
 Michael and Terese Cudwadie  
 John and Ann Curley  
 Janet Fowler Dargitz  
 Leo DeLorenzo

John Flanigan  
 Douglas Ford  
 Richard Fry  
 Fulton Financial Advisors  
 William and Kitty Lou Gamber  
 General Sales Co. of West  
 Chester, Inc.  
 David and Maribeth Genuardi  
 Michael and Bree Gillespie  
 Glatfelter Insurance Group  
 David and Virginia Glickman  
 Glocker & Company, Inc.  
 Richard and Anetta Good  
 Grand Street Boys' Foundation  
 Greenwich Court, Inc.  
 Robert and Tracy Grob  
 George and Dorothy Gross  
 Brian and Nina Hand  
 Michael and Susan Hanna  
 Hanna Electric  
 Jennifer Haring  
 Chris and Christina Hastings  
 Joni Hauck  
 Haven Homes, Inc.  
 William and Connie Hayes

Brad and Linda Karch  
 Keares Restaurant Group  
 James and Jody Keller  
 Joseph and Joan Keller  
 William and Sharon Kennedy  
 Timothy and Sandy Keohane  
 Anthony Kerlavage and  
 Barbara Harner  
 William and Jean Kirchhoff  
 Kitko Wood Products, Inc.  
 Benjamin and Jennifer Knepley  
 Andrew and Christine Kohlhepp  
 Donald and Janet Konkle  
 Ellen Konkle  
 Kate Konkle  
 Robert and Tracy Kornfield  
 Kozloff Family Charitable Trust  
 Kranich's Jewelers, Inc.  
 W. Minster and Carolyn Kunkel  
 Joseph La Flamme  
 Daniel and Kathleen Langdon  
 Dean and Carol Leib  
 John and Sandy Lieb  
 Nathan Lightner  
 Lobar, Inc., Construction Services

Louis Pantages  
 Partners Equity Capital Company  
 Carl Patchin  
 Patt, White Co.  
 Charles and Virginia Pearson  
 Penn State Alumni Association, Erie  
 County Chapter  
 Sophie Penney  
 Penske Truck Leasing, Co.  
 Eric and Debra Peterson  
 Rocco and Patricia Petrilli  
 Carol Pioli  
 Mark Pollard  
 Richard Powers  
 Alec Pringle  
 Dennis and Jenny Pyers  
 The Junior League of  
 Reading, PA, Inc.  
 Roland & Schlegel  
 John and Margaret Rosselli  
 David Rossi  
 William and Judith Rossman  
 Rotary Club of Hershey  
 William Rothman  
 Ruth Roush

Maria Sweet  
 Karen Taphorn  
 Thompson Masonry  
 Contracting Company  
 Terry and Judie Troupe  
 Tyco Employee Matching Gift Program  
 Larry and Karen Walker  
 Walker Financial Services  
 David and Joyce Warholic  
 Weston Solutions, Inc.  
 Richard Witty  
 Wolfington Body Company, Inc.  
 Quentin and Louise Wood  
 Alan and Kathryn Woolstare  
 Donald and Lisa Woomer  
 Bruce and Kim Yirinec  
 John and Catherine Yurconic  
 Tony Zalis  
 Karen Zawitkowski  
 Simon and Hope Ziff

\* Deceased

## THE POWER OF IN-KIND SUPPORT: Our Honor Roll of In-Kind Partners

In-kind donations are critical to The Second Mile. For every dollar in expenses that we save through in-kind support, we are able to extend our reach to serve even more children in need. This year, our auditors recorded more than \$370,803 in donated materials and services, our highest total ever, which represents the cost of seven+ weeks of our Summer Challenge Program with year-round follow-up. That's the power of in-kind support! Whether providing activities for foster families or campers, facilities for Friend Fitness or food for Friend activities, or prizes or supplies or accommodations or transportation, the roster of donors presented here alphabetically\* are essential to The Second Mile and the children and families we serve.

AdAbility, Inc.  
 AFLAC  
 Allenberry Resort Inn  
 American Music Theatre  
 Amerisuites  
 Aurum Jewelers & Goldsmiths  
 Barash Publishing  
 Best Event Rental  
 Best Line Equipment, Inc.  
 Bittner Vending  
 Blackbird Media Group, Inc.  
 Blue Banana Designs, Inc.  
 Blue White Illustrated  
 and Phil Grosz  
 Body Works/Fred Sahakian  
 Boyd's Bears  
 Brennan's Bayside  
 Bryce Jordan Center

Carraba's Italian Bar & Grill  
 The Cat's Meow Flower  
 & Gift Shop  
 Centre for Travel  
 Chat-A-While Inn  
 Cherry-Crest Farm/ Jack and  
 Donna Coleman  
 Cumulus Media Harrisburg  
 Damon's Restaurant  
 Dix Honda  
 Domino's Pizza  
 Emerson, Egervary & Associates  
 Fernwood Office Complex  
 First Book  
 First Media Radio, LLC  
 Fleet Pizza, Inc.  
 Fullington Auto Bus Co.  
 graphtech  
 H.J. Heinz Company  
 Harold Altman, Inc.  
 Harrison's Wine Country Grill  
 Henry & Co.

Heritage Hills Golf Resort and  
 Conference Center  
 The Hershey Company  
 Hershey Lodge and  
 Convention Center  
 HERSHEY PARK  
 Hospitality Asset Management  
 Hoss's Steak and Sea House  
 Jack Harper's Young Men's Shop  
 Johnsonville Sausage  
 Kentucky Fried Chicken  
 Fred Kissinger  
 Knoebels  
 Krapf Bus Companies  
 Kunzler & Company  
 KVF Associates  
 Land Displays, Inc.  
 Lakemont Park and The  
 Island Waterpark  
 Leitzinger Imports  
 Lock Haven University  
 MBNA  
 Magnum Media

John Manbeck  
 Mike's Video TV and Appliances  
 Nextel Partners, Inc.  
 Nittany Beverage/Strickler's Ice  
 North American Communications  
 Old Main Frame Shop & Gallery  
 Robert Orndorff  
 Penn State Golf Courses  
 Penn State Hospitality Services  
 Penn State  
 Sesquicentennial Committee  
 Pepsi Bottling Group-Altoona  
 Preferred Staffing Solutions  
 Ramada Inn and Conference  
 Center  
 Reading Phillies  
 The Ritz-Carlton Philadelphia  
 RJ Printers  
 S & A Custom Built Homes  
 S.J. Miska Goldsmith & Jeweler  
 Sheetz, Inc.  
 Shultz Transportation Company  
 Seltzer Partners

Shaner Hotel Group  
 Shasta  
 Sight and Sound Theatre  
 Snavelly Associates, Ltd  
 Spectra Wood  
 Strasburg Railroad  
 Student Book Store  
 Sullivan's Moving & Storage  
 Super 8, State College  
 Susquehanna Transit  
 Wachovia Bank  
 John Walizer  
 W.E. Esber Imported Rugs  
 Wolf Furniture  
 WPMT TV FOX43  
 W. S. Lee and Sons, Inc.  
 Your Private Printer  
 Zola New World Bistro

\*In-kind donations that  
 exceeded \$1000



Providing Children  
with Help and Hope

For more information about *The Second Mile* or to volunteer or make a donation, please contact us at:

**Main Office**

1402 S. Atherton Street  
State College, PA 16801  
(814) 237-1719  
FAX: (814) 237-4605

**Southcentral Regional Office**

3607 Rosemont Avenue, Suite 501  
Camp Hill, PA 17011  
(717) 763-4614  
FAX: (717) 763-4616

**Southeast Regional Office**

Park View Tower  
1150 First Avenue, Suite 150  
King of Prussia, PA 19406  
(610) 491-9440  
FAX: (610) 491-9441

[www.thesecondmile.org](http://www.thesecondmile.org)  
[office@thesecondmile.org](mailto:office@thesecondmile.org)

The official registration and financial information of The Second Mile may be obtained from the PA Department of State by calling toll-free within PA, 1-800-732-0999. Registration does not imply endorsement.

Printed by Advanced Color Graphics

## Corporate Board of Directors

Gerald A. Sandusky, *Founder*  
Robert Poole, *Chairman of the Board*  
Jack Raykovitz, Ph.D., *President, Ex-Officio*  
Linda Gall, *Vice Chairperson of Administration*  
Renee Marks, *Vice Chairperson of Programs*  
Lance Shaner, *Vice Chairperson of Development*  
Steven Seltzer, *Secretary*  
John Sheridan, Ed.D., *Assistant Secretary*  
Ralph Licastro, *Treasurer*  
Bill Martin, *Assistant Treasurer*  
Dan Bright, Esq.  
Linette Courtney  
Drew Garban  
John Greene  
Gerald Hall  
Ben Heim, Esq.  
Bruce Heim  
Carol Herrmann  
Jack Infield  
Rick Karcher  
Laurene Keck  
Alan Kirk, Esq.  
Tom Knepley  
Brad Lunsford, Esq.  
Charles Markham  
Judy Otian, Ph.D.  
Kim Ortenzio-Nielsen  
Nancy Ring  
DrueAnne Schreyer  
Harry Sickler  
Larry Snavelly  
Lewis G. Steinberg, Esq.  
Fred A. Strouse  
Richard Struthers  
Michael Sullivan  
Michael Trombley, Esq.  
John Walizer, Jr.  
Derek Walker  
Peter Weiler  
David Woodle

## Board of Directors, Southcentral Region

Eric Peterson, *President*  
Michael Fiaschetti, *Vice President*  
Daniel Gifford, CLU, *Secretary*  
James Young, *Treasurer*  
Marion Alexander  
Robert Baker  
Kelly Corrigan  
JoAnn DeRose  
Eddie Dunklebarger  
Mark Everest  
Kenneth Ewing  
James Ford  
Anne Deeter Gallaher  
Michael Gillespie  
Gary Groff  
James Hare  
Steven Hevner  
Michael Huegel  
Dorothy McGlenn Imbody  
Jody Keller  
Tom Kirchhoff  
Nathan Lightner  
Kimberly Ortenzio-Nielsen  
Dennis Pyers  
Neal Rhoads  
Robert Scott, Ph.D.  
Kenneth Shutts  
Michael Smith  
Jan Sockel  
Jack Sommer  
Charles Telfer  
Michael Van Belle  
Curtis Walizer

## Board of Directors, Southeast Region

Tom Knepley, *President*  
Doug Strang, *Vice President*  
Glenn Smith, *Secretary*  
Kristen Egan, *Treasurer*  
John Andress  
Terrance Bowman  
Gregory Elinsky  
Linda Fields  
Kevin Hand, Esq.  
Carolyn Irvin  
Sandy Kile  
Tom Law  
Ira Lubert  
Dave Luckner, CPA  
Sheri Pudlosky-Brierley  
L.J. Rowell, Jr.  
Jonathan Stillman  
Andre Taliaferro  
Blair Thomas  
Floyd Wedderburn  
Jenell Witkowski