



MINNESOTA
PUBLIC RADIO®

ANNUAL REPORT

2007



- 1 MIDMORNING HOST KERRI MILLER AND CLASSICAL MINNESOTA PUBLIC RADIO HOST STEVE STARUCH AT LIVE BROADCAST FROM ROCHESTER
- 2 THE CURRENT DJ STEVE SEEL READS TO KIDS AT ROCK THE CRADLE
- 3 CLASSICAL HOST JOHN BIRGE IN VIENNA FOR A SPECIAL BROADCAST OF THE SAINT PAUL CHAMBER ORCHESTRA
- 4 MINNESOTA PUBLIC RADIO DAY AT THE MINNESOTA STATE FAIR

It's been 40 years of looking forward at Minnesota Public Radio.

This year marks the 40th anniversary of Minnesota Public Radio. What began as a single signal at St. John's University in 1967 is now the nation's most complete statewide public radio network, serving a regional audience of 850,000 listeners through 37 stations presenting three broadcast network services.

MPR is stepping confidently into the digital age as we rise to meet the challenges of a fast-changing media landscape. As commercial media face increasing economic pressure to downsize newsrooms and artistic expression is constrained by the uniformity of consolidated media, MPR continues to respond as a primary source for vital information and cultural programming in the public interest.

In January 2007, our newly renovated, state-of-the-art St. Paul headquarters officially opened with an open house celebration for the public who helped create it. Our three services—News, Classical and The Current®—are now broadcasting digitally via HD Radio,® which allows them to add additional channels of service for those with HD radios. Our news channel is enriching its content by seeking out the knowledge in its audience and incorporating that into both the daily news agenda and to specific news stories. Our redesigned Web site, mpr.org, enjoyed another record number of unique visits in 2007 as it continues to stream MPR content around the world and enhance connections here at home.

Minnesota Public Radio News and Public Insight Journalism

Our newsroom's innovative approach to partnering with our audience, known as Public Insight Journalism (PIJ), has garnered international attention this year, as well as the inaugural Knight News Innovation EPpy Award. At its heart is our Public Insight Network of citizen sources, which in 2007 grew to 20,000 regional members who have agreed to share their insights and knowledge on areas of specific expertise with MPR News. From a series on Minnesota high schools, to coverage of Minnesota's Muslim community, to the I-35W bridge collapse, MPR is providing broader, deeper news coverage by tapping the collective knowledge of our community through PIJ. The model has been recognized as a potential antidote to the challenges currently plaguing commercial news outlets, and MPR has partnered with public radio stations around the country to help them implement their own Public Insight Journalism programs.

Classical Minnesota Public Radio

More than ever, classical music is alive at Minnesota Public Radio—both on the air and in the community—from “Spring Alive at Calhoun Square” to the Fargo Classical Music Festival. Online initiatives such as “Classical Love Notes,” which allowed audience members to send romantic classical music selected by MPR hosts to their loved ones, succeeded remarkably in driving listeners to our Web site and sharing our service with new potential audiences. In fact, the Minnesota Public Radio Classical network of stations reached an all-time high during the fall of 2006 with more than 375,000 weekly listeners. Our broadcasts of live performances, from the Minnesota Orchestra to the BBC Proms, continued to bring classical music beyond the concert halls and into the lives of listeners across the region and indeed around the world.

The Current®

Now in its third year, The Current is making waves on the air and among its listeners. The station created an interactive day of “listener controlled” programming called Radio Free Current, which was so successful it quickly became a weekly all-request show. The Current also launched its Song of the Day podcast, helping to drive MPR's total podcast reach from 19,000 to nearly 200,000 downloads a month. Signature events like *Rock the Cradle*, *Policy and a Pint*, and our participation in the *South by Southwest Music Festival* saw marked growth. The Current continues to handcraft one of the finest music services in the country and attract a young median age to public radio for music and then to become more engaged in news. We were pleased to see that of the young people listening to The Current, nearly 60% have now chosen MPR News as their second favorite station.

Three years ago, to better serve a national audience and better reflect our place as the industry's second largest producer of national programming, MPR founded American Public Media. Under the American Public Media Group banner, we now reach 15 million listeners with programs such as *Marketplace*, *A Prairie Home Companion*, *Speaking of Faith* and *Weekend America* on nearly 800 stations across the country. That continues a long tradition of embedding the ideas and talent of Midwesterners into the national agenda.

As we look to the future, your support will be more important than ever to meet our growing role as a primary source of information for our democracy; to invest in technology necessary to deliver that information in innovative ways; and to research and develop important new programs. As Thomas Jefferson said in a speech that rings true to this day: “Whenever the people are well informed, they can be trusted with their government.”

During our 40-year history, Minnesota Public Radio has been honored to be welcomed into the homes and workplaces of our listeners through our radio broadcasts. As the world migrates toward the new tools of the Internet, iPods and wireless devices, we are grateful for the opportunity to enrich lives and enhance communities in new ways and places.

We deeply appreciate the generous support and trust we receive from our 95,000 members and donors. The fact that you feel strongly enough about the MPR service and mission to become a vital part of it speaks volumes about all we have accomplished together and about the promise of the future.

Thank you for your support.

William H. Kling, President



- 5 MINNESOTA PUBLIC RADIO NEWS “THINK FOR YOURSELF” CAMPAIGN
- 6 LIVE AUDIENCE INTERVIEW IN THE UBS FORUM
- 7 THE CURRENT DJ MARY LUCIA TALKS WITH AUTHOR AMY SEDARIS AT A CURRENT FACEBOOK EVENT
- 8 IN THE LOOP PRODUCER SANDEN TOTTEN FIELDS AUDIENCE COMMENTS IN THE UBS FORUM

“Minnesota Public Radio makes the Minnesota Orchestra’s music available for the widest audiences possible, in our state, across the U.S. and around the world. This kind of broad reach to a vast audience is invaluable to us.”

Osmo Vänskä, Minnesota Orchestra music director

Consolidated Statement of Activities and Resulting Net Assets

Fiscal year ended June 30, 2007, with comparative totals for the fiscal year ended June 30, 2006

RESULTS FROM OPERATIONS

During the fiscal year ended June 30, 2007, the operating net assets of Minnesota Public Radio | American Public Media (MPR|APM) increased \$54 thousand, on total activity of \$69.3 million, leaving an ending balance of \$213 thousand in the Operating Fund. The Operating Fund is used to record the activities of day-to-day operations.

The largest source of revenue continues to be support from the public at 64% of total operating revenue. Specifically, the largest category within support from the public is individual gifts and membership which accounts for \$12.5 million of support for the organization. Other support for the organization comes in the form of underwriting (both national and regional), grants from endowments, foundations, and businesses.

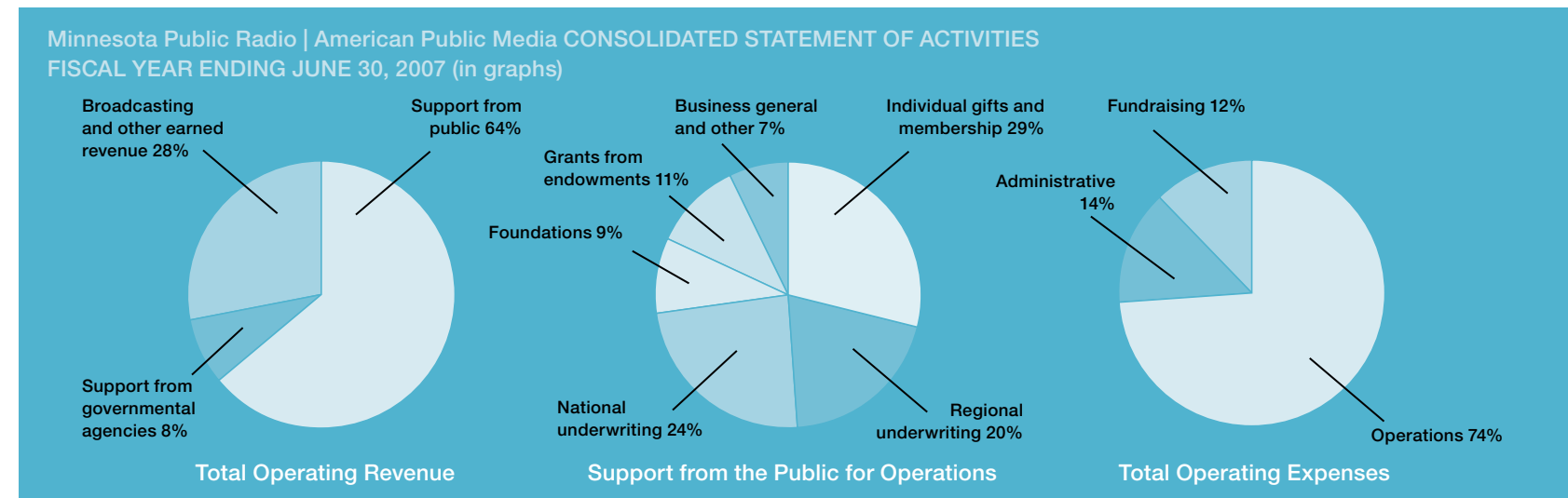
On the expense side, day-to-day ongoing operations accounts for 74% of total operating expenses, followed by administrative support at 14% and fundraising at 12%.

LONG-TERM SUPPORT

Rounding out the remaining net assets of the organization are funds intended for the long-term support of MPR|APM. This includes the Property Fund which is used for all land, buildings, building improvements, equipment, licenses, etc.; the Designated Fund which is used for various grants and bequests; and Temporarily and Permanently Restricted Funds which are intended for specific purposes and are subject to donor-imposed restrictions. The total change in all Long-Term Support items held at MPR|APM was an increase of \$1.7 million in the fiscal year ending June 30, 2007.

In addition to the Long-Term Support held at MPR|APM, there is also an earned endowment held at American Public Media Group for the benefit of MPR|APM. This endowment was created from proceeds of past successful business activities. The balance of the earned endowment held at American Public Media Group was \$118 million as of June 30, 2007.

This earned endowment, when combined with the permanent external endowments held at the Minnesota Community Foundation and The Oakleaf Endowment Trust, result in total endowments intended for the benefit of MPR|APM of \$142.9 million as of June 30, 2007.



THE COMPLETE AUDITED FINANCIAL STATEMENTS FOR MPR|APM CAN BE FOUND ON OUR WEB SITE AT WWW.MPR.ORG/FINANCIALS.


Minnesota Public Radio | American Public Media

CONSOLIDATED STATEMENT OF ACTIVITIES FISCAL YEAR ENDING JUNE 30, 2007 (in thousands)

with comparative totals for the fiscal year ended June 30, 2006

	Year Ended June 30, 2007 Unrestricted					Temporarily Restricted	Permanently Restricted	Year Ended June 30 Total	
	Operating Fund	Property Fund	Designated Fund	Interfund Eliminations	Total			2007	2006
SUPPORT FROM PUBLIC:									
Individual gifts and membership	\$12,484	\$ -	\$ -	\$ -	\$12,484	\$ 609	\$ -	\$13,093	\$11,836
Regional underwriting	8,574				8,574	107		8,681	8,043
National underwriting	10,338				10,338	(406)		9,932	10,654
Business general support	1,050	59			1,109	(69)		1,040	891
Foundations	4,069	24			4,093	1,934		6,027	6,388
Grants from endowments	4,877				4,877			4,877	4,661
Other intercompany grants	1,462	374	210	(22)	2,024			2,024	83
Educational sponsors	392				392			392	772
Other public support	112				112			112	40
TOTAL SUPPORT FROM PUBLIC	43,358	457	210	(22)	44,003	2,175		46,178	43,368
SUPPORT FROM GOVERNMENTAL AGENCIES:									
Corporation for Public Broadcasting	5,238	886			6,124	1,005		7,129	5,395
Other governmental support	304	1,120			1,424	2,328		3,752	645
TOTAL SUPPORT FROM GOVERNMENTAL AGENCIES	5,542	2,006			7,548	3,333		10,881	6,040
EARNED REVENUE:									
Revenue from broadcasting activities	11,114				11,114			11,114	9,892
Live event revenue	4,978			(114)	4,864			4,864	3,990
Royalties and licensing fees	1,049		2		1,051			1,051	1,389
Investment return — net	103	190	545		838	(9)	2,228	3,057	2,357
Other earned revenue	1,931	100		(200)	1,831	(21)		1,810	1,891
TOTAL EARNED REVENUE	19,175	290	547	(314)	19,698	(30)	2,228	21,896	19,519
TOTAL SUPPORT AND EARNED REVENUE	68,075	2,753	757	(336)	71,249	5,478	2,228	78,955	68,927
EXPENSES:									
Operations	51,097	4,594	21	(336)	55,376			55,376	49,674
Administrative	9,496	1,403	407		11,306			11,306	10,293
Fundraising	8,674	1,093			9,767			9,767	6,867
TOTAL EXPENSES	69,267	7,090	428	(336)	76,449			76,449	66,834
SUPPORT AND REVENUE IN EXCESS OF (LESS THAN) EXPENSES	(1,192)	(4,337)	329		(5,200)	5,478	2,228	2,506	2,093
MINORITY INTEREST IN JOINT VENTURE	(63)				(63)			(63)	(29)
CAPITAL CAMPAIGN REVENUE	901	3,151			4,052	(102)		3,950	17,727
CAPITAL CAMPAIGN EXPENSE		(65)			(65)			(65)	(1,713)
LOSS FROM OPERATIONS OF DISCONTINUED BUSINESS									(50)
GAIN FROM SALE OF DISCONTINUED OPERATIONS									590
TRANSFER TO EARNED ENDOWMENT			(4,512)		(4,512)			(4,512)	
INTERFUND TRANSFERS	408	1,289	(1,721)		(24)	24			
CHANGE IN NET ASSETS	54	38	(5,904)		(5,812)	5,400	2,228	1,816	18,618
NET ASSETS — BEGINNING OF YEAR	159	52,343	16,956		69,458	13,811	22,651	105,920	87,302
NET ASSETS — END OF YEAR	\$ 213	\$ 52,381	\$ 11,052		\$ 63,646	\$19,211	\$ 24,879	\$ 107,736	\$ 105,920

THE COMPLETE AUDITED FINANCIAL STATEMENTS FOR MPR|APM CAN BE FOUND ON OUR WEB SITE AT WWW.MPR.ORG/FINANCIALS.



“Minnesota Public Radio’s The Current embodies what I love most about Minnesota: innovation, citizen engagement, excellence ... and really great music.”

Sean Kershaw, *Citizens League executive director*

Acknowledgments

We are grateful to all individuals and organizations whose generosity ensured the achievement of our mission to engage listeners, expand perspectives and strengthen communities in fiscal year 2007 (July 1, 2006, through June 30, 2007).

Government, Foundation and Corporate Contributors

The mission at Minnesota Public Radio | American Public Media cannot be realized without the tremendous support extended to us by these contributors. In fiscal year 2007 (July 1, 2006, through June 30, 2007), corporations, foundations and government agencies made philanthropic grants to support the annual programs, services and capital projects that fulfill our mission. Within each category, contributors of \$1,000 and above are listed in descending order of their financial support. Underwriting support from corporations and businesses are listed separately on this page in alphabetical order. We sincerely appreciate the partnership and financial commitment of the following organizations.

Government Support

Corporation for Public Broadcasting
 State of Minnesota
 National Endowment for the Arts
 National Endowment for the Humanities
 City of Saint Paul Cultural STAR

Foundation Support

Kendeda Sustainability Fund of Tides Foundation
 Blandin Foundation

The Ford Foundation
 The Huss Foundation
 John D. and Catherine T. MacArthur Foundation
 Ewing Marion Kauffman Foundation
 FINRA Investor Education Foundation
 The Henry Luce Foundation, Inc.
 The McKnight Foundation
 The Starr Foundation
 Surdna Foundation
 Lilly Endowment Inc.
 Freeman Foundation
 The George Family Foundation
 W.K. Kellogg Foundation
 The David B. Gold Foundation
 Northwest Area Foundation
 Phyllis S. Poehler/Walter E. Stremel Charitable Trust
 The Commonwealth Fund
 Charles A. Weyerhaeuser Memorial Foundation
 McCormick Tribune Foundation
 Open Society Institute Katrina Media Fellowship
 The Ploughshares Fund
 MAHADH Fund of HRK Foundation
 Curtis L. Carlson Family Foundation
 Andersen Corporate Foundation
 Faegre & Benson Foundation
 Katherine B. Andersen Fund of The Saint Paul Foundation
 The Spencer Foundation
 Boss Foundation

Carl and Eloise Pohlrad Family Foundation
 Education Minnesota Foundation
 Casey Albert T. O'Neil Foundation
 Margaret Rivers Fund
 The Southways Foundation
 Edward R. Bazinet Foundation
 Hartz Foundation
 Elizabeth Quinlan Foundation, Inc.
 Mary Livingston & Mary Griggs Burke Foundation
 St. Croix Foundation
 The Saint Paul Foundation
 Archie D. & Bertha H. Walker Foundation
 The Albert Parvin Foundation

Corporate Support

Deloitte
 3M Foundation
 General Mills Foundation
 IBM Corporation
 The Cargill Foundation
 Wells Fargo Foundation Minnesota
 National Interfaith Cable Coalition, Inc.
 Ecolab Foundation
 U.S. Bancorp Foundation
 Best Buy Children's Foundation
 Ameriprise Philanthropic Program
 The Capital Group Companies
 Thrivent Financial for Lutherans Foundation
 Securian Foundation
 Deluxe Corporation Foundation
 Rosemount Inc.
 Pentair Foundation
 The Valspar Foundation
 Thomson Legal & Regulatory/Thomson West Grants Program
 Xcel Energy
 G&K Services Foundation
 Peregrine Capital Management
 International Dairy Queen Foundation
 Twin Cities Chapter of the American Guild of Organists
 Tennant Company Foundation
 Microsoft Corporation
 Toro Company
 GMAC-RFC
 Malt-O-Meal Company
 Prudential Foundation
 Guidant Foundation
 Education Minnesota
 Great River Energy
 SUPERVALU Foundation
 Travelers Foundation
 Macy's Foundation
 SIT Investment Associates Foundation
 BAE Systems Land & Armaments
 Land O'Lakes Foundation
 Emerson Electric Co.
 Tapemark
 ING Foundation
 Felhaber Larson Fenlon & Vogt
 Pfizer, Inc.
 Adobe Systems Incorporated
 Quaker Hill Foundation
 Bellcomb Technologies Incorporated

Honeywell Hometown Solutions
 Eli Lilly & Company Foundation
 Symantec
 TCF Foundation
 H.B. Fuller Company
 JSJ Corporation

Regional Corporate Underwriters \$50,000 and above

Arts & Custom Publishing
 Blue Cross Blue Shield
 CenterPoint Energy
 Dorsey & Whitney LLP
 Flint Hills Resources
 Great River Energy
 Greater Twin Cities United Way
 HealthPartners
 Hennepin Theatre Trust
 Leonard Street and Deinard
 Macalester College
 Medica
 Minnesota State Colleges and Universities
 Minnesota State Fair
 Minute Clinic
 Pentair Inc.
 Robins, Kaplan, Miller and Ciresi
 The Saint Paul Hotel
 SPCO - The Saint Paul Chamber Orchestra
 Summit Brewing Company
 Toyota Regional Dealers Association
 The Travelers Companies, Inc.
 UBS Financial Services

UCare Minnesota
 Walker Art Center

Individual Contributors and Members

Minnesota Public Radio | American Public Media has a rich tradition of financial support from individuals, families, corporations and foundations throughout the Upper Midwest and the nation. We at Minnesota Public Radio are grateful to those whose generosity ensured the achievement of our mission to engage listeners, expand perspectives and strengthen communities in fiscal year 2007 (July 1, 2006, through June 30, 2007) through their annual financial support. On the following pages we are pleased to recognize our leading supporters.

President's Circle \$25,000 and above

Anonymous (1)
 Thomas W. and Lorna Gleason
 Daniel and Constance Kunin
 Karin L. Larson*
 Dusty and George Mairs
 Mr. and Mrs. Robert J. Sivertsen*
 Joanne and Philip Von Blon*

Leadership Circle – Benefactor \$15,000 to \$24,999

Peggy and Ralph Burnet*

David and Vanessa Dayton
 Ruth E. Hanold
 Whitney and Elizabeth MacMillan
 Mr. Robert T. Priddy
 Emily Anne and Gedney Tuttle

Leadership Circle – Director \$10,000 to \$14,999

Anonymous (1)
 Mary Lee Dayton
 Patrick J. and Lisa Denzer*
 William Moore and Janet Dolan*
 Janet and Glenn Hansen
 Alfred and Ingrid Lenz Harrison
 Mr. and Mrs. Leonard C. Hoeft
 Randall J. and Sara G. Hogan*
 Al and Kathy Lenzmeier
 Daniel T. and Helen Lindsay
 Walt McCarthy and Clara Ueland
 McGann Associates and Terry McGann
 Glen and Marilyn Nelson*
 Mr. and Mrs. Bartley Osborn

Leadership Circle – Investor \$5,000 to \$9,999

Brad H. and Janet R. Anderson*
 Anonymous (6)
 Steve Bachman
 Susan S. Boren*
 Nicky and Tom Carpenter
 Dr. Kim and Dede Chart
 The Chizek Family Foundation
 Eva Cordes and Samuel P. White

Zip and Lisa Cotter
 Thomas R. Crane and Roxann Kay
 Carol Daly
 Paula and Cy DeCosse
 Dan Dodds
 Hugh and Joyce Edmondson
 The Connie Foote Family Fund of The Saint Paul Foundation
 Charlotte Forsythe Fund of Headwaters Foundation for Justice
 John J. Frey and Jane E. Letourneau
 Ian Friendly and Carol Pettitt Friendly*
 Peter Graham
 Bruce and Joanne Gruen
 Ruth and John Huss
 Chris and Paul Kadue
 Sally and Bill Kling*
 R.C. Lilly Foundation
 Larry Hill and Linda Mohr
 Mary M. and David Moffett*
 Pamela and Mark Moret*, The Moret Family Charitable Fund of The Lutheran Community Foundation
 Mort and Alice Mortenson
 Lisa and John Nicotra
 Mr. and Mrs. William R. Pearce*
 James J. Phelps and Nancy McGlynn Phelps*
 Louise B. Plank
 Dr. Shirley M. Polly and Dr. David W. Polly, Jr.
 E. Thomas Binger and Rebecca Rand
 Paul C. and Mary Reyelts*
 Jerry and Joanne Robertson

John and Lois Rogers
 Karen Rylander
 Kathleen Stack and Tom Kelley
 Austin and Doll Sullivan*
 Kara and Guy Vig
 David and Mary Ann Wark
 Mrs. Ellen M. Wells
 Sharon and Clark Winslow*
 Mary R. Wolszon
 Mr. and Mrs. C. Angus Wurtele

**Leadership Circle – Leader
 \$2,500 to \$4,999**

Susan and Louis Ainsworth
 Jeffrey R. Anderson
 Anonymous (7)
 Valerie Arganbright
 Annette Atkins and Tom Joyce
 Martha and Bruce Atwater
 Donna Avery and Thomas Kigin
 Dale L. and Jane Bacon
 Cheryl Bailey and Daniel Humes
 Vasco and Lida Bernardi
 Andy and Cheryl Bessette*
 Mr. and Mrs. Conley Brooks, Sr.
 Gift in memory of Boris Greenberg
 Kris Burhardt and April Spas
 Orison Y. and Cassandra P. Chaffee
 Sandra and Lynn Davis
 Susan DeNuccio
 Dan and Luz Digre
 Mary F. DiMarco
 Pamela Endean and Colleen M. Carey

Kenneth A. Epstein
 Jason M. and Debra S. Erickson
 Richard and Beverly Fink
 Mr. and Mrs. Peter L. Frechette
 Steven L. and Susan G. Fritze*
 Barbara A. Gaughan
 Richard A. and Linda Glasgow
 Eugene and Zola Hardwick
 Elizabeth and Steven Helgen
 Douglas C. Hepper and
 Anne W. Pantelich
 Mary Herman
 Hognander Foundation and
 O. C. Hognander, Jr.
 Michelle and David Horan
 Hans R. Horton
 Jacqueline Nolte Jones
 Lucy Rosenberry Jones
 Kathy and John C. Junek
 Jana V. and Chitra J. Kanyadan
 The Margaret H. and
 James E. Kelley Foundation
 Jonathon D. and Ann P. Kemske
 Richard H. King and Gina Heath King
 Kurt W. Klitzke
 Emery Koenig
 Dianne and Scott Krizan
 Mr. and Mrs. John R. Lampert
 Paula S. Larson and Kim Howard
 Lemke Services Inc.
 Ross and Bridgett Levin
 Leland T. Lynch and Terry Saario
 Fund of The Minneapolis Foundation

Stephen Mahle
 Mary K. Mahley Family Foundation
 William M. Mahlum and Donna Allan
 Richard and Carol Marcantonio*
 Barbara L. and Thomas R. McBurney*
 Deborah McCarl and Marilyn Skurdahl
 McCarthy-Bjorklund Foundation
 Hannah McGraw-Dzik and
 Thomas W. Dzik
 Bill and Martha McLaughlin*
 Jon and Debra McTaggart
 Joan and Thomas V. Mears
 Mary and Bob Mersky
 Ruth Mickelsen and William Manning
 Amy Mulvahill
 Nicholson Family Foundation
 Linda C. Odegard and Harlan Cavert
 Constance S. Otis
 Katherine Payne
 Daniel R. Pennie
 Dr. Patricia Penovich and
 Dr. Gerald Moriarty
 Nancy and Dick Pflager
 Judith and Nickolas Priadka
 Cecil C. Ramnaraine
 Laura Jean Rathmann
 Marilyn and Steven Rothschild*
 Pamela Sander
 Gillian Schivone
 David J. and Pamela Serdar
 Dr. Patricia S. Simmons and
 Dr. Lester E. Wold
 Miriam G. Simmons and James L. Schenz

Nikki Sorum and Simon Foster
 David R. Strand* and M. Bridget Duffy
 William Svrluga
 Cynthia Swessel-Hofer
 Jim Swindal
 Joseph Tashjian and Kay Savik
 Ed and Carol Wagner
 David and Ann Wasson
 Ruth A. Weaver
 Jane and Dobson West
 Daniel Wetterlin and Mona Inman
 Hugh Wolff and Judy Kogan
 Fred and Roxanne Ziecina

**Leadership Circle – Partner
 \$1,200 to \$2,499**

Grant Abbott and Elaine Tarone
 Mary Ackerman and James Reents
 Dr. Sally M. Ehlers
 Jim and Julia Adams
 John and Catherine Agee
 Sheri A. Ahl and Eric Haugen
 Todd and Allyson Aldrich
 Mark and Diana Alfuth
 James and Sue Alker
 Norman G. and Roberta M. Allan
 Margaret Alldredge
 Idith and Yuval Almog
 Royal and Karen B. Alworth
 Suzanne and William Ammerman
 Sarah J. Andersen and Chris A. Hayner
 Jackie A. and Bruce S. Anderson
 Karl and Leah Anderson

Paul and Mary L. Anderson
 David and Debra Andreas
 Mr. John E. Andrus, III
 Dr. Felix Ankel
 Mr. and Mrs. D.H. Ankeny
 Anonymous (8)
 Jean and Michael Antonello
 Barbara L. Appleby
 Paul and Sue Arneson
 Candace and David Arp
 Gordon Asselstine
 Kirk and Terry Atkinson
 Timothy J. Aune and Anne Miller
 Gordon J. and Josephine Anne Bailey
 Walt and Ginger Bailey
 Sandra and Barry Baines
 John B. and Nancy R. Baird
 Baker Family Fund of
 The Minneapolis Foundation
 Karey and Jayesh Balakisnan
 Susan and Joel Barker
 Dr. Kenneth S. Barklind
 Mr. and Mrs. Thomas J. Barrett
 Dr. Patricia A. Barrier
 Susan and Vincent Barton
 Patrick and Andrea Bassett
 Carol and Brian Baxter
 David A. Beam
 Barbara and James Beattie
 Ned and Sandra Beatty
 Michael J. and Kathy Beckins
 Mary and Keith Bednarowski
 Mary L. Belford

Michael Bell
 Ellen and Michael Bendel-Stenzel
 Susan Benfield
 Jeff Bengtson and David Bjork
 Elisabeth R. Bennett
 Rolf Benson
 Anita M. and Floyd E. Bertelsen
 Colleen A. Bertino
 Michael Bettison and Brenda Hudson
 Don and Penney Birdsong
 Beatrice and David Bishop
 Lois and Jonathan Bishop
 Michelle Blaeser
 John A. and Mary Blanchard
 Karen Blumberg and Dan Rischall
 David L. and Shari Boehnen
 Carolyn and Fred Bogott
 Honorable Robert E. and Andy Bowen
 James R. Boyle and William Neumann
 Tom Braun
 Charles W. Breer and Holly J. Brackett
 Fredric and Deborah Bremseth
 Kelly Brenna and Paul Gerbec
 Alice E. and Charles A. Bresnahan
 Priscilla Brewster
 Arnold M. and Judith Brier
 Mark Brill and Laura Scott
 Atherton and Pat Bristol
 Mrs. Edward Brooks
 Dr. Jay C. Broton and
 Timothy A. Lander
 Deborah G. Brown and
 Stephen J. Hanson

Jeffrey and Gretchen Brown
 Elizabeth G. and Clifford W. Bruber
 Mark and Kathy Brutinel
 Scott Bucholtz
 Lisa MS and Duane R. Buck
 George W. and Carol Buckley*
 Robert G. Buley
 Chris T. and Clare Buntrock
 Ronald M. and Kim M. Burd
 Burdick Craddick Family Charitable
 Foundation
 Dr. Nicholas Burke and Susan Slattery-
 Burke
 Martin and Susan Burke
 Ellen Butler
 Robert E. and Gail Buuck
 Charles and Norma Buxton Family
 Foundation
 William E. Buzenberg
 Philip B. and Mary L. Byrne
 William W. and Connie Cameron
 Peter Capell
 Sally and Michael Carey
 Terrance L. Carlson and Jeanette Leehr
 Paul and Bridget Carns
 Irene M. Carr
 Joan B. Carvalho
 Cecil H. and Margaret M. Chally
 Marie Christensen
 Tony Christianson and Adam Smith
 Companies, LLC
 Haines Clausen
 William Cliby and Victoria Spero

Roberta S. Cline
 Linda Coetzee
 Sheila M. Colgan
 Robert B. Collins
 Mary Sue Comfort
 Virginia Conklin
 Patricia Conley
 Janet M. Conn
 Mike C. and Leslie B. Connelly
 Joel Conner
 Patrick Cook and Sandra Schwanz
 Kristen Copham and Leo Kuelbs
 Mark and Karri L. Copman
 Dr. Iris Cornelius
 The Cornerstone Group
 Judith S. and Richard F. Corson
 Barry and Susan Cosens
 Margaret P. Cost
 Martin J. and Barbara Costello
 Sage and John Cowles
 Charles A. Cox
 Bill and Winkie Coyne
 Lydia Crawford
 Robert M. Crone and Mary L. Cameron
 Ella P. Crosby
 Ellie and Tom Crosby
 Dr. Lana Crowley and Mark McGrew
 Mary Beth Crowley
 Carl W. and Judy Cummins
 John and Mary Lou Dasburg
 Charme and R.C. Davidson
 R. Scott and Patricia Davies

David D. and Candy Davis	Alexis Tara Duffy	Hilla F. Ferguson	Terry and David Gilberstadt	Rebecca Harrington	Jean and Arthur L. Hogenson	Sunny Johnson	Wesley and Deidre Kramer
Fran Davis	Joseph Duffy	Ted Ferrara	Gerald and Toni Gilchrist	Pamela M. Harris	Jared and Melinda Hoke	Tom and Jan Johnson	Timothy M. and Mary Ann Krautheim
Michael W. and Beth Davis	Peggy A. and Duke Dunham	Gerald B. and Catherine Fischer	Kevin Gordon and Michelle Traeger	Dr. Lynn C. Hartmann	Drs. Leighanne and Harnath Holmes	William and M Susan Jolitz	Robert Kriel and Linda Krach
Dawkins Family Fund of The Saint Paul Foundation	Jacquelin R. Dunn	Larry E. Fix	Dr. Jean C. Gorman and Dr. J. Roger Edson	Charlie and Robin Hartwell	Alex B. Holzinger	Cheryl D. Jones and Gordon Uttermark	Tim and Kathy Kroening Smith
Daniel and Deborah Day	Jennifer and Russell Dunn-Foster	Paul and Judy Florell	Jon Kevin Gossett	Donald and Marguerite Harvey	Anne Larsen Hooley and Mark Hooley	Phyllis G. Jones	Michael and Ivanka Krogh
Megan M. and James G. Dayton	Dr. and Mrs. David L. Duval, M.D.	Michael L. and Susan K. Flynn	Christopher Gostout and Bobbie Smith Gostout	Greg Haselmann and Nancy Hanks	April E. Horne and Gary J. Komaniecki	R. Scott and Anne Jones	Mary and Jim Krook
Ned and Sherry Ann Dayton	Dr. Peter J. and J. Isabelle Dyck	Force Science	Peter and Mary Gove	James Haselmann	Dr. and Mrs. Charles A. Horwitz	Edward Juda	Paul and Linda Krueger
Stefan DeBoel	Ruth and Mark Eaton	Barbara Forster and Lawrence Hendrickson	Frances Graham and Dr. Robert J. Gumnit	Kathryn W. and John D. Hatlestad	Craig and Susan Howe	David F. and Michelle Kallmes	Candace Kruttschnitt and Tom Hart
Ane-Grethe and Rory A. Delaney	Scott and Brenda Eckes	John G. Forsythe	Lynn Grandys	Julie Hauer and Lawrence Charnas	Alana Hinrich Howey and Dale M. Howey	Kathleen Kane	Stephen Kuehne
Steven and Peggy DeLapp	Susan B. and James Edberg	Michael and Berit Francis*	Lisa Gray	Ruth and Paul Hauge	Mike Hoxie	Carolyn and John Kanyusik	Anita and Myron Kunin*
Claudia Dengler and Alan A. Saltzman	Perry R. Eddy	Cynthia M. Frane	Deanne and John Greco	Jennifer Ann Haugh	Jaymes G. and Janet C. Hubbell	John C. Kaplan and Kristine Legler Kaplan	Tim and Sharon Kurtt
Fernando Di Caprio and Julia P. Joseph-Di Caprio	Stanley C. Eitrem	Arvonne and Don Fraser	Kevin S. and Jan Gregerson	Noel C. Haugh and Martie E. Woods	Jay Alan Hudson and Susan Lynn Burton	Sidney and Joy Kaplan	Robin J. Kutil, M.D.
Ariel Dickerman	Chip and Vicki Emery	Marge and Dave Fraser	Mr. and Mrs. N. Bud Grossman	J. Mark Haugland, M.D., and Margo Struthers	Bill and Hella Mears Hueg	Sylvia and Sam Kaplan	Dr. and Mrs. James LaFave
Jan Dickinson and Scott Veatch	Mark and Carol Engebretson	Carol Freeman	Nancy C. and Larry Grubbs	Roger and Elaine Haydock	Jake Hurwitz and Doreen Frankel	Joe Kapolka and Kerry Noyes	John O. and Nancy H. Laird
Tony and Sunny Didier	Lester Engel	Iris C. Freeman and Warren Woessner	Brian T. Gruis	Allen W. Hayes	Mary E. Husband	Mike P. Kaselnak and Michelle Taylor	Stephanie Laitala
Dennis and Nickie Dillon	Erik J. Englebretson and Kathryn E. Farniok	Ron Frehner	Melanie D.C. and Martin T. Grune	David and Sharonne Hayes	Peter Hutchinson and Karla Ek Dahl	Andrea and Carl N. Kaster	Richard B. and Virginia K. Lane
Dr. Ann C. Dillon and William H. Lohman	Jodi Ennen Chu	Bayard French	Bob's Cabins	Stewart Hazel and Mary Schlosser	Nina Ingalls	Mr. and Mrs. Kenneth Kaufmann	Rollie and Leonard Langer
Loralee J. and Eugenio H. Dilorenzo	Rebecca L. Erdahl	James R. and Mary W. Frey	Albert B. and Geraldine Hagedorn	Richard Heck and Suzanne Kochevar	Chris and Val Jackson	Margaret F. and Kevin J. Keenan	Linda G. Langin
Sarah Doebler and Timothy Myers	D. Bruce and M. Joy Erickson	Dr. Ann Friedmann	Russell Hagen	Scott G. Hein	Benjamin S. and Patricia Jaffray	Fred and Sandra Kiel	Drs. Jim and Penny Langland
Louis Doering and Jill Padley	Traci Esades	Tiegen and Susie Fryberger	Fred Hahn	Thomas R. and Carole A. Hektner	Michele E. Janin and Tom Linebarger	Mr. Thomas and Dr. Patricia Kingston	Kirsten and Alan Langohr
Jill T. Doescher	LeeAnn and Jeffrey Ettinger	Martha and John Gabbert	Carmen G. and Dale L. Hall	Bernt and Suzin Helgaas	Dwight Jennings	Anthony L. Kiorpes	Caryn and Charles Lantz
Melissa Donkers	Marion Etwiler and John Shepherd	Naomi Gades	Gregory and Diana Hall	Kristin Laura Helling	Karla and Andrew Jennings	Aaron and Dana Kirkemo	John W. Lassila
Dr. and Mrs. Robert F. Donley	Wendy Evans	Jean E. Gallo	Keith M. Halperin and Karen Grabow	Jean Henjum and Gerry Flannery	Kim Jenson and Tom Elsen*	Karen M. Kjolhaug	Ms. Bobbie Lauer
Christee and Patrick J. Donovan	Patricia Fair and Randy Arnold	Jon and Christine Galloway	Peter G. Hames	Mary C. Henry	Betty and Bud Johnson	Kathryn Klibanoff and Jeremy Edes Pierotti	D.J. Leary and Linda L. Wilson
Dee and Jim Dorsey	Lisa A. Fall	Rick Garber and Gina Bonsignore	Dennis Hamilton and Cheri Diesem	Mary Kay Hicks	J. Angie and Lars Johnson	Dennis S. and Kathy Klohs	Doug and Louise Leatherdale
Kathy and Michael Dougherty	Susan and Al Fan	Carson and Gail Gardner	Willa and Robert Dohlman	Nancy Hill and John Birchem	Mark Johnson and Katie Ballantine-Johnson	Dave Kmiec	Sam Lecompte
Joe Dowling and Siobhan Cleary	Jerry Farrell	Mr. and Mrs. James P. Gardner	Tammy Hamzhepour	Jeff and Liz Hilligoss	Mrs. Troy Johnson	Tom Knabel, M.D.	James Lee and Linda Norris
Carl B. Drake, Jr.	Ronald J. and Claire Faust	Joanne Gaul	Ann Marie Hanrahan	Dr. and Mrs. Walter A. Hinck	Patricia Johnson	Barry and Julia Knight	Wanda A. and William A. Lee
Margot and Garrett Drake	O.J. and Karen Fawcett	Sara and Thomas Gavin*	Carl and Mary Hansen	Elizabeth Hlavka	Rev. Robert D. Johnson and Mrs. Diane F. Johnson	David Knighton	Willy and Kacia Lee
Steve and Maria Duane	Charles J. Fazio and Sallie Quammen	Kathie and Ken Geiger	Brett Gemlo and Elizabeth A. Snelson	Dianne M. and Wayne L. Hoeschen	Sally and Rodger Johnson	Mr. and Mrs. Ted Kolderie	Joseph and Frances Leek
Joan Duddingston	Judy and Noel Fedje	Ellen Feldman and Ronald Brockman	David E. Gerdes	Jack and Linda Hoeschler	Scott W. and Marjorie Johnson	Judith P. Kolwicz	Richard R. and Jeanne Lemberger
				Diane and Tony Hofstede		Eleanor and Richard Krahn	Dawn M. Lemke and Joseph R. Homrich

Vanda Lennon	Kathi Austin Mahle	Margaret J. Meier and Rebecca L. Lindholm	Vince Netz	Jennifer L. Peters	Dr. William Rupp and Dr. Janis Clarke	Jason S. Shapiro	James A. and Merrie W. Stolpestad
Helen Leslie and Ron Goldser	Tom Mahoney and Madeline Maxeiner	Judy and Harold G. Melanson	Ann Newhall and Richard Schleuss	Mrs. Edmund Phelps	Robert G. and Matilda Rupp	David and Karen Sharbo	James R. Stone
Thomas M. and Rhoda Lewin	Gary Mainor	Kathy Iverson and Dr. Mike Menzel	Gary E. Nichols	Joan Piche	Jill Rusterholz	Kathryn T. Shaw and Larry A. Labonte	Patrick and Margaret Stoy
Bruce and Diana Lewis	Rhoda and Don Mains	Dennis and Margaret Meyer	John Nieber	David G. and Jane N. Piepgras	Ed and Jenni Ryan	John and Jane Sherman	William and Lee Strang
Guilford Lewis and Rondi Erickson	Sandra and Thomas J. Mallon	Kimberly Middendorf	Ann C. and Robert Niedringhaus	Jeff and Carolyn Piepho	Robin Ryan	Joseph and Leslie Shneider	Judith Strong
Piers I. and Kathryn G. Lewis	Mark C. and Nancy Mammel	Rosalyn R. Milbrandt	Janice Nielsen	Margaret P. and John M. Pierce	Faith E. Rynders	Richard P. Shore and Phyllis Moen	Leonard L. Sueper
Stephen and Sheila Lieberman	Ted and Roberta Mann Foundation	Steven H. Miles, M.D. and Joline Gitis	Christine K. and Dermot F. Norton	Mr. and Mrs. Addison L. Piper*	John and Lynn Sabre	Peter Shortridge	Charles James Suk
Matt J. and Tina A. Liiste	Michael and Ann M. Markman	Charles and Laura F. Miller	David and Tudy Nycklemoe	David and Susan Plimpton	Louis C. Saeger	Ken and Ellie Siess	Christopher J. Sullivan and Lydia L. Parker
Barry and Gloria Lindquist*	Chris M. and Erica S. Marsden	Kerri Miller	Timothy M. and Gayle Ober	Scott R. Plummer	Suchitra and Ramasubbu Sairam	Mr. Cal Simmons	John L. Sullivan, Jr.
Paul and Jane Linnee	Margery H. Martin	Thomas A. and Donna Miller	Kay and Michael O'Keefe*	Jim and Donna Pohlad	John C. Sall	Dr. Lawrence J. Sinak and Anne L. Black-Sinak	Karen R. Sussman
Keith C. Linney	Kevin A. Marvelli and Michael Garvey	O. Eugene Millhouse	Patrick and Amaria O'Leary	Dan Polglaze and Pam Hermann	Jan F. and Richard J. Sandberg	Lisa Sinclair	John and Beth Anne Sutcliffe
Jane E. Ljungkull	Charles N. Marvin Family	Douglas Milroy	Timothy W. and Virginia Olsen	Dwight and Chris Porter	Dr. Paul B. Sanford	Ranjit Singh	Janette Sweasy
Jean R. Ljungkull	Rick Mattox	Vanita Mishra	Mike Olson	Harriet and Walter Pratt	Barney and Patricia Saunders	Steven A. and Beth Sjoblad	Diane Syme
Tim and Susanna Lodge	Ken Maurer	Walter F. and Joan Mondale	Sue and Tim Olson	Mary Pulford	Thomas A. Saunders	Jeff and Barb Skochil	Ralph Tauke and Marilyn Adam
Mark B. Long and Heather A. West	Lucia P. May and Bruce Coppock	Bjorn and Margot Monson	Ted Olson and Chris Bellefeuille	Laurie M. Rahr	Paul Saxton	Margaret J. and Lee B. Skold	Jean M. Taylor and Roger D. Griffith
Dana R. Lonn	Norma and Max May	Christopher F. and Celeste Moore	Marc P. Ondrechen	June P. Rauschnabel	Dennis Schapiro and Jeanne Andre	Thomas T. Schattenberg	Terhuly Family Foundation
Virginia A. and Richard H. Lorang	Michael W. and Kay McCarthy	Wende and Jim Morrell	Gary M. Osberg	Mary and Joseph W. Regenscheid	Greg and Raquel M. Schears	Greg and Raquel M. Schears	Jamie J. and Tamara K. Thingelstad
Michael D. and Wendy P. Lougee	Ed and Margaret McConaghay	Jerene Mortenson	Larry and Bonnie O'Shaughnessy	Nancy E. Reid and Robert M. Roach	Cynthia and Milo Schield	Catherine and Bradley Smegal	Missy Thompson and Gar Hargens
Anthony Lourey and Marlana Benzie- Lourey	Polly McCormack and Keith Engel	Marianne Moulson and John Greenzweig	George L. Osland	Brian and Dawn Reidinger	Hugh and Margaret Schilling	Douglas C. Smith	Mary Ida Thomson
Patricia Loving	Vickie L. McCormick	Mary Muirhead	Doug and Phyl Ostergren	David J. Reilly	Audrey Schroeder	Joan T. Smith	Joyce E. Throm
Pamela Lowe and Dr. William J. Lowe	Mr. and Mrs. Robert McCrea	Rita A. and Timothy G. Mulcahy	Julie A. Ottis and Neil Neddermeyer	Dan and Christine Rice	Diane S. and Paul A. Schroeder	Neill A. Smith	Dr. Gerald W. and Susan E. Timm
Dr. and Mrs. William E. Ludwick	Kathleen McEvoy and William Blackburn	The Mulcahy Family Fund of The Saint Paul Foundation	Dick and Amy Owen	James M. Richards	Mary and Carl Schroeder	Richard B. Solum and Dorsey & Whitney	Julia Timm and Stephan Kieu
Connie and Scott Luedtke	Dick and Joyce McFarland Fund of The Minneapolis Foundation	Barbara Muller	Kari C. and David Oxford	Ridgedale State Bank	Nancy Schultz and John Eckfeldt	James E. Sorensen	David Toft
Dale J. and Mary O. Lungwitz	Terrence G. McGann and Jean E. Burke	Dr. James H. Munn	Gregory Page	Frank and Gladys Ritter	Edward Schwarz and Marsha Haagenson	Mark A. and Rebecca B. Sorensen	Kari P. and Bernt E. Torgerhagen
Mr. and Mrs. C.H. Luther	Bill and Jean McGarry	Katherine and Kingsley Murphy	Margaret Palaskas	Donald Rockenbach	Melonie J. and Daniel L. Sebring	Dr. and Mrs. John Soucheray	Janice and Christina Torres
Sarah Lutman and Robert Rudolph	Brenda and Warren McGuire	Elizabeth B. Myers	Joseph E. and Christine Parisi	John and Sandra Roe	Beth Ann and Saul Segal	Sylvia Soucheray	Judith Trepka
David and Mary Maas	Anne McKinsey	Tracy E. Napp	Carolyn M. Parnell	Tim and Marci Roesler	Mr. and Mrs. Bruce A. Seiber	Mr. and Mrs. Edson W. Spencer	Barbara E. Tretheway
Mitchell Macenski	Richard and Deborah McNeil	Mrs. Philip H. Nason	Paula Patineau	Lucy Rogers and Larry Grant	Susan O. and Jonathan Seltzer	Florence Sponberg	Jessie L. and Carl C. Trickett
Jane J. and Reed Mackenzie	Tom B. McRoberts	Ellen R. and David Thomas Neale	Dr. Joanne Pearson	Beverly J. and John A. Rollwagen	John E. Seng	Gus and Mary Staahl	Timothy J. and Deborah Twito
Joan C. Maclin	David and Cyndi Meier	Janelle Nelson	Robert and Ann Perkins	Fund of The Minneapolis Foundation	Jan R. Serie	Jodi Standke and Thomas Stephan	Idara D. Uko
R.J. Macpherson, Jr.		Martha A. Nelson	Lawrence and Linda Perلمان	Susan S. and James P. Ross	Burton Shacter	Peter John Stark	Michael and Mary Unhjem
Dr. Margaret MacRae			Mary Lynne and Michael Perushek	Karen and Donald Rudrud		Dr. and Mrs. Bruce W. Stender	Krishnan Unni
				William T. Ruhl		Melissa and Tim Stoddart	

Faith E. Rynders	Linda and Ron Wenger	\$1,000 to \$1,199	Kelly and Fritz Debrine	Joseph R. and Mary A. Hayden	Steve and Judy Lueck	Patrick O'Rourke	Nancy Slaughter
William H. and Mary P. Upjohn	Mark G. and Mary Lou Werner	Meredith B. Alden	Charles M. and Carol Denny	Gordon and Winifred Hed	Kim Lund	Steven Otto	Dr. D.P. Sowada
Kirsten L. Vadheim	Florence Wertz	Kurt Anderson	Humphrey and Elisabeth Doermann	Richard and Anna Heinrich	Ronald Lund	Jenelle Peters	Rachel A. and Adam V. Stock Spilker
Peter Van Wyngeeren	David West and Kristin Schoephoerster	Sigurd Wilhelm and Sharon Anderson	Lara and Daniel Duddingston	Peter H. Herzog and June M. Wheeler	Nivin S. MacMillan	Elizabeth Petrangelo and Michael Lundeby	Nancy and John Strom
Jacqueline Vaughan	Lauren and Robert West	Elizabeth H. Andrus	Nathan A. Dungan and Susan Hawks	Anne and Richard Hovland	Lynda and Jim Mallery	Jane E. Piccard and Hunt Greene	Loretta L. Stutsman
Mary W. Vaughan Fund of The Minneapolis Foundation	Cynthia Wetmore	Anonymous (1)	Alta Egbers	Paul C. and Lynn R. Hunt	Gene Mammenga and Charlotte Brooker	Ron and Molly Poole	Dr. Thomas Sundquist
Ellen and Eileen Vavrina	Duane E. White	Sally and Peter Anson	Audrey G. and Jack K. Eickhof	Mike J. Huot and Katie MacDonald	Timothy Mardell	Jill and Greg Post	Denise Swager
James A. Vela-McConnell	Robert B. Whitlock and Margaret R. Weber	Nina and John Archabal	Joe Eikmeier	Robert Hussey and Jennifer Collins	Mr. and Mrs. Robert S. Mars, Jr.	Mr. and Mrs. Stephen Prager	Keith Swanson
Susan L. Vento	Dr. Linda H. Whitman	Sharon Banister	Mr. and Mrs. George P. Flannery	M. K. Jacobs	Elisabeth C. Mason	Drs. James M. and Constance Pries	Roby Thompson
Janice Verruso	Per and Elaine Wickstrom	Gretchen and Mark Banks	Dr. Janice Fleming	Clyde E. Johnson	James B. Massie	Joann C. Quale	Kate Tilney and Fred Kaemmer
General and Mrs. John Vessey	Chris and Sharon Widstrom	William J. Barrett	CF Design, Cheryl Fosdick	Ralph Allen Johnson and Dorothy Spearman Johnson	Arthur and Sandy Matas	Mary T. Quigley	Glenda D. and Jon Tollefson
Jane Voglewede and David Abbott	Phyllis Wiener and Shayna Berkowitz	Mr. and Mrs. W.H. Beery	Robert E. and Ruth Foster	Charles and Sally Jorgensen	Edwin J. and Susan McCarthy	Thomas M. Racciatti	Jeff Van Keuren
Betsy and Paul Von Kuster	William A. Wiktor and Elaine Case	Johanna Bell	Judith M. Funk-Ford	Janifer Judisch	Barbara A. and Steve R. McGraw	Anton and Beth Rang	Ronald and Carol Vantine
Rosalie E. Wahl	Bruce and Ellen Williams	Pete Bissonette	Frank and Sheree Mead Gaughan	Keelin Kane and Mark Bixby	Mary Bigelow McMillan	Mr. and Mrs. Walter H. Rauschenfels	Debra Venker
Sally W. Wahman and Timothy L. Carter	Mary Lou Williams	Olivia H. Blackburn	Doug and Mary Kay Geston	Kevin Keenan	Donald McNeely Family	Lorna Reichl and Roger A. Peters	Richard and Kyla Wahlstrom
Winston R. and Maxine H. Wallin Fund of The Minneapolis Foundation	Ned and Carolyn Williams	Carole and J. Richard Bland	Susan and Stan Goltz	Marsha Kelly	Dr. Mary Meland and Dr. Joseph Meland	Jean S. Replinger	R. Jack Walser
Andrew Walseth	Kristopher Wilson and Amanda Elg	Jennifer Brandl	Lee Gregerson	Heidi Kempin	Dr. D.C. Meredith	Roman Richardson	Edy Ward
Mary and Graham S. Waltz	Armaiti and Ross M. Winberg	Jan and Ellen Breyer	Mr. and Mrs. Pierson M. Grieve	Courtney C. and Robert B. Kiernat	Marjorie Merryman	Eleanor L. Roberts	Karen J. Weidner and Kurt Klotzbuecher
Linda Warner and Kenneth Hoj	Eleanor and Frederick Winston	J.T. and Terry Bumgarner	Bobby I. and Barbara P. Griffin	David King	Alida R. Messinger	Dr. Ann M. Rock	Karel M. Weigel
The H. E. and Helen R. Warren Foundation	Estate of John S. Winston	Lou and Allan Burdick	Joel M. Grover	Louise A. Klas	Bob Metzger	George and Susan L. Romano	Rory and Danna Welper
Kenneth D. and Mary H. Waschke	Mr. and Mrs. Charles Withers	Maura and Terry Cahill	Groves Foundation	Valorie L. Klemz	Larisa Meyer	Jonathan and Karen Sack	Donna L. and George W. Welsh
Marcus Waterbury	Mike and Donna Wolsted	Patrick and Marlyn Cain	William Dean Gullickson	Leo and Diana R. Klisch	Joseph S. and Jane Micallef	Jacques E. Samy	Patrick and Pilar Wenning
Nancy B. and Douglas Watkins	Claude A. Worrell and Kim N. Faith	Bruce A. Christensen and Ann Streitz Christensen	Roger Hale and Nor Hall, Reheal Fund of The Minneapolis Foundation	Knopf Family Foundation	Lynnell Mickelsen and John Bellaimey	Chris and Scott Saville	Mr. and Mrs. F.T. Weyerhaeuser
Watson Family Fund of The Minneapolis Foundation	Bernard and Jane Worth	Dr. Robert D. and Nancy E. Christensen	Edward H. Hamm	Steve and Kim Koeppen	Terry Mistalski	Paul and Karen Schanfield	Sharon and Robert Wichman
Linda Wax	Zita H. Wright	Brian E. and Susan S. Clark	Mona and David Harmann	Gail Korell and Doug Brown	Asha Morgan Moran and Marty Moran	Bonnie B. and Thomas O. Schwalbe	Frank and Frances Wilkinson
Lee Wear	Anita and Jon Young	Jean and Richard W. Clarke	Barbara Haroldson	Mr. and Mrs. John A. Larsen	Mr. and Mrs. John Murphy	Mary M. Schwartz	Virginia and Gerard Wimmer
Margaret Weglinski	Biloine (Billie) Young	Gary and Susan Cramer	Frank Harris	Carole and Don R. Larson	Michael Nelson	Robert E. and Kimberly Scott	John W. Windhorst
Charles Weise	Steven and Karen Ytterberg	June B. Curme	Scott Harrison	James A. and Mary Lawrence	Kate and Stuart Nielsen	Michael and Susan Seeland	Carol J. Winter and Kirk Dornfeld
Mary Ruth Weisel	Greg and Susan Zoidis	Dana J. and Mary Beth Dawson	David Hartwell and Elizabeth DeBaut	Dr. Donald D. Layton and Mrs. Phyllis Layton	Fred L. Nolan and Ellen J. Siewert	Don Shelby	Penny and Mike Winton
Paul Alan Weitz	Diane Marie Zwirn and Christopher Matthew Blake	Mr. and Mrs. Robert J. Dayton	Dr. Bob E. and Justine Haselow	Margaret Lazaretti	Lowell and Sonja Noteboom	Robert and Anne Simpson	Greg G. and Donna Young
	Gage Family Foundation	Wendy and Doug Dayton	Justine Haselow	Lynn M. and Tim H. Lee	Phyllis S. Olson	Jeff Skie	Frank J. Zabel
	Regis Foundation		Paul E. Havel		Connie C. O'Neil	Ann Skoglund	Charles and Julie Zelle

The Colman Barry Legacy Circle

The Colman Barry Legacy Circle, named for Minnesota Public Radio's founding chairman, is made up of individuals who, through their thoughtfulness and generosity, have named Minnesota Public Radio in their estate plans or have provided direct gifts to the Permanent Endowment of Minnesota Public Radio. We are pleased to recognize the following individuals for their membership in the Colman Barry Legacy Circle during fiscal year 2007 (July 1, 2006, through June 30, 2007).

Lois and Jerry Abraham
 Jean Abramson •
 Sandra M. and Thomas Ahlstrom
 Dennis Albrecht
 Mary Alden •
 Elizabeth Almlie •
 Laura E. Anders
 David and Marian Anderson
 Hobart and Charlotte Anderson
 Sigurd W. Anderson
 Suzanne and Tim Anderson
 Richard Charles Annett •
 Anonymous (23)
 A. Jerome Arneson and Maryjeanne Arneson
 Gordon B. and Joyce Asselstine
 Carol Austermann

Glenn and Carolyn Ayres
 Jim Azarski and Nancy Werner-Azarski
 Steve and Sharon Bachman
 Norman and Margaret Baker
 Kay and Tom Barrett
 Gretchen Barsness
 Helen Astrid Barton •
 Thomas Bell •
 Judson and Barbara Bemis •
 Barbara Beresford
 Ray L. and Carol J. Bergeson
 Ruth Bergstrom
 Mr. and Mrs. René Bessat
 Gayle A. Bidne
 Piero Bocciarelli
 Stephanie R. Boddy •
 Eugene Boe •
 Kenneth G. Bomberg •
 James and Alice Boyce
 Sheryl D. Breen
 Thelma and Bill Bryson
 Robert L. Bullard
 Gladys Burmaster
 Bernice J. Bussan •
 Ruth Cadwell •
 James Callahan
 Sally and Michael Carey
 Susan and James Cargill II
 Nicky B. Carpenter
 Dr. Kim and Dede Chart
 Adrienne Christiansen
 Roger Clark

Janet M. Conn
 Patrick Cook and Sandy Schwanz
 Kristin Copham and Leo Kuelbs
 Stephen Coury
 Catherine F. Croghan and Kathryn Robbins
 Edwin W. Davis •
 Ken Davis •
 Michael W. and Beth Davis
 Northrup and Sonnie Dawson
 Jac De Hoog •
 William Dehoff
 Janna DeLue
 Diane P. Diegel •
 Ellen Dresselhuis
 Joseph and Lois Duffy
 Heidi and Scott Dulebohn, in memory of Lee T. Lautenschlager •
 Dick and Sally Duncan
 Jacquelin R. Dunn
 Shirley Dworsky •
 Thomas and M. Johannah Dzik
 Dr. and Mrs. Robert T. Eagan
 Joan E. Eckerly
 LaVonne J. Ellingson
 Richard E. and Jean Engebretson
 O.J. and Karen Fawcett
 Drs. Lloyd A. and Patricia A. Fish
 Marion Fisher
 Dr. Janice Fleming
 John and Hilde Flynn
 Connie Foote
 Clare Fossum
 Jenny Rebecca Frantz

Barbara • and Bayard French
 Cheryl Frobenius •
 Sharon Fruetel
 Bruce L. and Alice K. Gaarder
 Scott German
 Thomas W. and Lorna Gleason
 James F. and Betty A. Goff
 Kevin Gordon and Michelle Traeger
 Susan Greer
 Kevin and Jan Gregerson
 Katelore Guerin •
 Judith A. Hahn
 Jane and Ron Hall
 Elaine Halverson
 Murill P. Halvorson
 Frances Hand •
 Dorothy Handford •
 Dr. and Mrs. S. Handler
 Mrs. Terrance Hanold
 Janet and Glenn Hansen
 Nancy A. Harris
 Pamela M. Harris
 Kathryn Harwig and Loren Magsam
 Virginia Hathaway •
 Allen W. Hayes
 Charles and Eloraine Heagle •
 Beulah A. Hebbel •
 Michael Helffrich
 Phil Henoeh
 Gudrun Hertsgaard
 Bea Hildestad
 Stanley Hill •

Brenda Himrich
 Dr. and Mrs. Walter A. Hinck
 Alan and Judy Hoffman
 Dorothy D. Hoffman
 Arthur L. Hogenson
 Orville Hognander, Jr.
 Jake Hurwitz and Doreen Frankel
 Dr. Frank J. Indihar
 Jeannie Inglehart
 The Art James Classical Music Memorial Fund •
 Gene P. Johnson
 Todd Johnson
 Kyle W. Jones
 Charles R. and Sally B. Jorgensen
 Marilyn Kaeli
 Lee and Judy Kaster
 Gary and Shirley Kerkow
 Dorothy Hagey Kettner
 Mary Ann Kimball •
 Dorothy and Ruth Kincaid •
 Bob Kinkade
 Aaron and Dana Kirkemo
 Sternie Kissen-Rosen •
 Sally and Bill Kling
 Dean Knowles
 Arvid J. Koski
 Arthur and Priscilla Kourajian
 John C. Kraning and Sharon A. Sinclair
 Jeanne Kress •
 Linda E. Krach and Robert L. Kriel
 Tim and Kathy Kroening Smith
 Rev. Shalom Kropfl

Allen and Phyllis Kuehl Zumach
 Marilyn La Brec
 Lora Lakin
 Virginia C. Larsen
 Jane Larson •
 Jeffrey S. and Dianne S. Larson
 Karin L. Larson
 Marilyn Lawrence
 Lydia R. Lee •
 Estelle Lee •
 Rhoda and Tom Lewin
 Mabelle Lindsay •
 Ruby Q. Lokensgard
 Diane Dobitz and Jean Lovett
 Paul C. Lund
 Lee Lynch and Terry Saario
 Carol Ann and Harvey Mackay in memory of Gladys and Rudolph W. Miller
 Roderick MacRae •
 Dr. Linda Magdsick
 Gary Magnuson
 Mary Ellen Malkasian
 Gail Manning and David Richards
 George B. Martin, Jr. •
 Jon D. and Haidi Masley
 Willis L. Mayo •
 Michael W. and Kay McCarthy
 Jane McCoid •
 Robert and Polly McCrea
 Mr. D.C. (Pat) McFarland
 Mary K. McLeod
 Jon and Debra McTaggart
 Dr. Jan Meyer

William and Vicki Michaelis
 Ruth Mickelsen and Bill Manning
 David and Trudy Morgenstern •
 Allan E. "Pat" Mulligan
 Eunice Munck •
 Harold Mundahl
 Wayne Munday
 Charles F. Murphy
 Dorothy and Miles Murphy •
 Diana F. Nelson
 Gertrude D. Nelson
 Marybeth Nelson
 Jerome and Susan Neumeyer
 Joyce Nordstrom •
 Rose Marie Novotny
 Gerard J. Obert •
 Stephen Odegard •
 Claude J. O'Donnell •
 Susan Ohnesorge and Frank Solomonson
 Ronald O. Olson
 Sandra K. Olson, Ph.D.
 Marc P. Ondrechen
 Elizabeth Oschwald
 David and Stephanie Oskie
 Doug and Phyl Ostergren
 Dr. Charles A. Owen, Jr. •
 Betty Patsche
 Mr. and Mrs. William R. Pearce
 Bob Pearson
 E.M. Pearson Foundation
 Patricia Wheelock Pederson •
 Greg and Ellen Pelletier

Nadine Peterson
 Richard and Nancy Pflager
 Patricia G. Pfundstein •
 Carolyn and Jeff Piepho
 Joanna Lukens Pierce
 Sandy Pietron
 Joe Plante
 Phyllis Poehler •
 Patrick S. Poole •
 Joanne D. Power
 Gary W. and Kathleen Propp
 Ronald L. Ramsay
 Thue and Uttara Rasmussen
 Ellen Rau •
 Thelma R. Reid
 Heck W. and Marguerite Remington •
 Robert E. Remington
 Julie Renner
 Sarah B. Riske •
 Kevin R. Risner
 John Roberson
 Karl H. Rose •
 James Albert Rowe •
 Arlene Russell •
 Evelyn E. Salter •
 Mark Sandell
 Virgil Sandquist •
 Morgaine Sattva
 Frances E. Schaar •
 Robyn and Richard Schroeder
 Mendon F. Schutt Family Fund
 Edward Schwarz and Marsha Haagenson

Charlotte M. Seguin
 Marcel Luc Sell
 Dr. Raymond Senkus
 Miriam G. Simmons and James L. Schenz
 Mr. and Mrs. R.J. Sivertsen
 Julie Slapp
 Nancy Slaughter
 Stephanie Small
 Joan T. Smith
 James E. Sorensen
 Oscar J. and Laurel Sorlie
 Nancy K. Spannaus
 Mr. and Mrs. Leonard Spira
 Kathleen A. Stack
 Vickie Staudte
 Kathleen Stokker
 Dorothy Sullivan
 Gladys A. Swanson •
 Jim Swindal
 Diane F. Syme
 Joseph and Lisa Thiags
 Irma Thies
 Henrietta P. Torgerson
 Clara M. Ueland
 Margaret L. Ueland •
 Ruth E. Ulvog
 Donald P. Untiedt
 Stephen Vitvitsky
 Joanne and Philip Von Blon
 Scott Vrchota
 Edward and Carol Wagner
 Laraine Walker

Rev. Mary Karen Wallum
 William O. Webster •
 Mary Lou Werner
 Mr. and Mrs. Dave Wester
 Erica Whittlinger
 Glenys Wignes
 C. Neil Williams
 Barbara S. Willits
 Myrtle Winslow •
 John S. Winston and Mary L. Lange
 Jean C. Wirsig
 Col. & Mrs. Nat & Harri Wisser
 Michael and Donna Wolsted
 Wendy L. Worner and Jonathan Nye
 K.P. Worthington
 Mr. and Mrs. Emerson Wulling •
 Eva O. Young
 Ruth and Dale Zschoche

Capital Campaign

In July 2006, The Next Standard came to a successful close, thanks to a capstone gift of \$3 million from UBS, a leading wealth management firm. The gift completed the technological infrastructure and provided funds to launch programming in The UBS Forum. Construction of the new Minnesota Public Radio | American Public Media Broadcast Center, which houses 375 employees, 24 studios, and 10 editing suites, is now complete. The success of the campaign is due

to the trust and generosity of the 7,800 individuals and institutions that contributed \$56 million.

\$1,000,000 and above

Katherine B. Andersen Fund of The Saint Paul Foundation
 Best Buy Children's Foundation
 F.R. Bigelow Foundation
 Bush Foundation
 Gary Comer Science & Education Foundation
 Corporation for Public Broadcasting
 General Mills Foundation
 The JL Foundation
 The Kresge Foundation
 Karin L. Larson
 The McKnight Foundation
 Tad and Cindy Piper
 The City of Saint Paul
 The Saint Paul Foundation
 Mr. and Mrs. Robert J. Sivertsen
 UBS

\$500,000 to \$999,999

3M and the 3M Foundation
 Fred C. and Katherine B. Andersen Foundation
 Brad and Janet Anderson
 Cargill
 Mary Lee Dayton
 Ecolab Foundation
 Dusty and George Mairs
 Mardag Foundation

The Medtronic Foundation
 Mort and Alice Mortenson
 National Endowment for the Humanities
 The Nelson Family Foundation
 Carl and Eloise Pohlad Family Foundation
 Travelers Foundation
 C. Angus and Margaret Wurtele

\$250,000 to \$499,999

Peggy and Ralph Burnet
 Clover Fields Foundation
 B.C. Gamble and P.W. Skogmo Fund of The Minneapolis Foundation
 The Huss Foundation
 Ruth and John Huss
 Estate of Eunice Munck
 Pentair
 The Regis Foundation
 The Paul and Mary Reyelts Fund of The Minneapolis Foundation
 U.S. Bancorp Foundation

\$100,000 to \$249,999

Andersen Corporate Foundation
 Conley and Marney Brooks
 The Curtis L. Carlson Family Foundation
 Lisa and Patrick Denzer
 Alfred and Ingrid Lenz Harrison
 Randall and Sara Hogan
 Sally and Bill Kling
 Constance and Daniel Kunin
 Doug and Louise Leatherdale
 Al and Kathy Lenzmeier
 MAHADH Fund of HRK Foundation

Marbrook Foundation
 Walter McCarthy and Clara Ueland
 Bill and Martha McLaughlin
 Mary Bigelow McMillan
 Bill and Barbara Pearce
 E.M. Pearson Foundation
 Piper Jaffray Foundation
 Estate of Sarah B. Riske
 John and Sandra Roe
 Marilyn and Steve Rothschild
 Securian Financial Group
 The Southways Foundation
 Ellen D. and Sheldon S. Sturgis
 Thrivent Financial for Lutherans
 Mary W. Vaughan Fund of The Minneapolis Foundation
 Joanne and Philip Von Blon
 The Winston R. and Maxine H. Wallin Fund of The Saint Paul Foundation
 Wells Fargo Foundation Minnesota

\$50,000 to \$99,999

Hugh J. Andersen Foundation
 Annette Atkins and Tom Joyce
 Martha and Bruce Atwater Fund of The Minneapolis Foundation
 James Ford Bell Foundation
 E. Thomas Binger and Rebecca Rand Fund of The Minneapolis Foundation
 Edward Dayton Family Fund
 Faegre & Benson Foundation
 Thomas W. and Lorna P. Gleason
 The David B. Gold Foundation
 Mary Livingston Griggs and Mary Griggs

Burke Foundation
 Estate of Ruth and Dorothy Kincaid
 R.C. Lilly Foundation
 Pamela and Mark Moret
 Morgan Family Foundation
 Kingsley H. Murphy Family Foundation
 Bob and Carolyn Nelson
 Bruce and Carol Nicholson
 Harriet and Edson Spencer
 James and Merrie Stolpestad
 Alleen and Jerry Tostrud
 Wenger Corporation
 Estate of Myrtle Winslow

\$25,000 to \$49,999

Sarah J. Andersen
 Jeff and Diane Balagna
 Susan S. Boren
 Nicky B. Carpenter
 Kim Chart
 Anne and Art Collins
 Colleen Carey and Pam Endean of The Cornerstone Group
 Tom and Ellie Crosby, Jr.
 John and Mary Lou Dasburg
 Douglas and Wendy Dayton
 Cy and Paula DeCosse
 Barbara Forster
 Fiterman Foundation & Liberty Diversified Industries
 Steve and Susie Fritze Family Fund of The Saint Paul Foundation
 G&K Services
 Jon Kevin Gossett

Nor Hall and Roger Hale, in honor of Joanne Von Blon
 Lorraine Hart
 Lucy Hartwell
 Orville C. Hognander, Jr.
 Art and Martha Kaemmer Fund of HRK Foundation
 Sam and Sylvia Kaplan
 Mr. and Mrs. Ted G. Kolderie
 Anne Larsen Simonson
 John Larsen Foundation

Jean R. Ljungkull
 Leland T. Lynch and Terry Saario Fund of The Minneapolis Foundation
 Ted and Roberta Mann Foundation
 Rick and Carol Marcantonio
 Thomas and Barbara McBurney
 McCormick Tribune Foundation
 Jon and Deb McTaggart
 Mary and Bob Mersky
 David and Mary Moffett
 Larry R. Hill and Linda L. Mohr
 Nelson, Tietz & Hoye, Inc.
 Dick and Nancy Nicholson
 Timothy and Gayle Ober
 Oppenheimer Wolff & Donnelly LLP
 Lawrence and Linda Perlman
 James J. Phelps and Nancy McGlynn Phelps
 The Jay and Rose Phillips Family Foundation
 The Racciatti Family Fund
 Gary and Susan Rappaport
 William and Susan Sands

The Scrooby Foundation
 David Strand and Bridget Duffy
 Austin and Doll Sullivan
 Ten Times Ten Foundation
 Patrick and Jane Thiele
 Emily Anne and Gedney Tuttle
 Valspar Corporation
 Ed and Carol Wagner
 The Whitney Foundation
 Sharon and Clark Winslow

\$10,000 to \$24,999

Estate of Jean M. Abramson
 Craig J. Alexander Fund of The Minneapolis Foundation
 Martha Alworth
 Peter and Sally Anson
 Donna Avery and Thomas Kigin
 Jonathan and Lois Bishop
 Ellen and Jan Breyer
 Carol and Conley Brooks, Jr.
 Jeffrey S. and Gretchen L. B. Brown
 M. Nicholas Burke, M.D. and Susan Slattery-Burke
 Cemstone Concrete Solutions
 Margaret Pierson Cost
 Laura and John Crosby, The Hudson Foundation
 Robert and Joan Dayton
 Deloitte & Touche LLP
 William Moore and Janet Dolan
 Carl and Charlotte Drake
 Andrew Duff
 Lucia Duff

Jacquelin Dunn
 Susan and James Edberg
 Dick and Jean Engebretson
 Michael and Berit Francis
 Gray Plant Mooty Foundation
 N. Bud and Beverly Grossman Foundation
 John Harrer and Kate Ellis
 Hognander Foundation
 Cathy and Pat Hopf
 Doreen Frankel and Jake Hurwitz
 Scott and Marjorie Johnson Fund of
 The Minneapolis Foundation
 Chris and Paul Kadue
 Estate of Mary Ann Kimball
 Dr. Aaron and Dana Kirkemo
 Kurt W. Klitzke
 Anita and Myron Kunin
 Eric and S. Andrea Larson
 Estate of Lynda Rand Lee
 Frances and Joseph Leek
 Ross and Bridget Levin
 Guilford Lewis and Rondi Erickson
 Barry and Gloria Lindquist
 Sarah Lutman and Robert Rudolph
 Rhoda and Don Mains
 Margaret Telfer and Ed McConaghay
 McGann & Associates
 Lynnell Mickelsen and John Bellaimey
 Dr. and Mrs. Bjorn K. Monson
 Jack L. and Chris A. Morrison
 Estate of Joyce R. Nordstrom
 Lynn and Ben Oehler
 Bart and Kandi Osborn

Constance S. Otis Fund of
 The Saint Paul Foundation
 Harriet and Walter Pratt
 Anne Pierce Rogers
 John and Beverly Rollwagen
 Estate of Virgil Sandquist
 Miriam Simmons and James Schenz
 Mrs. Alfred F. Soucheray
 Kathleen A. Stack and Thomas J. Kelley
 Mary Lynn and Warren Staley
 Loretta L. Stutsman
 William Svrluga
 Tennant Foundation
 Missy Thompson and Gar Hargens
 Kate Tilney and Fred Kaemmer
 Tozer Foundation, Inc.
 J.J. Yore and Mary Beth Kirchner
 Charles and Julie Zelle
 Phil and Anne Zink

Board of Trustees (as of October 25, 2007)

Board Officers

Glen D. Nelson, M.D., Chair
 Randall J. Hogan Vice-Chair
 William H. Kling, President
 Ian R. Friendly, Treasurer
 Sara H. Gavin, Secretary

Trustees

Bradbury H. Anderson (2003)
 Vice Chairman and CEO,
 Best Buy, Inc.
 Andy Bessette (2007)
 Executive Vice President and CAO,
 The Travelers Companies, Inc.
 Susan S. Boren (1985 – 1998) (1999)
 Partner, SpencerStuart
 George W. Buckley (2007)
 Chairman, President and CEO, 3M
 Peggy P. Burnet (1998 – 2007)
 Owner, Bookcase of Wayzata
 and Watermark Fine Stationery
 (Board Secretary 2006 – 2007)
 Patrick J. Denzer (2006)
 President and CEO,
 John B. Collins Associates, Inc.
 Janet M. Dolan (2007)
 Former CEO, Tennant Co.
 President, Act III. Enterprises
 Michael R. Francis (2002 – 2007)
 Executive Vice President, Marketing,
 Target Corporation
 Ian R. Friendly (2007)
 Executive Vice President and COO, U.S.
 Retail,
 General Mills, Inc.
 Steve Fritze (2002)
 Executive Vice President and CFO,
 Ecolab, Inc.
 Sara H. Gavin (1998)
 President,
 Weber Shandwick Minneapolis

Randall J. Hogan (2002)
 Chairman and CEO, Pentair, Inc.

Kim R. Jenson (2007)
 Managing Director, Regional Manager
 Upper Midwest,
 UBS Financial Services, Inc.

William H. Kling (1973)
 President and CEO,
 American Public Media |
 Minnesota Public Radio

Anita H. Kunin (2001)

Karin L. Larson (2002)
 Chair,
 Capital International Research, Inc.
 Los Angeles, CA

Barry Lindquist (1986 – 2000)
 (2001 – 2007)
 Managing Principal,
 Lakeside Capital Partners LLC

Richard L. Marcantonio (1998 – 2007)
 Chairman and CEO,
 G&K Services, Inc.
 (Board Vice Chair 2006 – 2007)

Thomas R. McBurney (1982 – 2007)
 McBurney Management Advisors
 (Elected Life Trustee 10/07)

William R. McLaughlin (2001)
 President, CEO and
 Chairman of the Board,
 Select Comfort, Inc.

David M. Moffett (2003 – 2007)
 Retired, Vice Chairman and
 CFO, U.S. Bancorp

Pamela J. Moret (2000)
 Executive Vice President,
 Marketing and Products,
 Thrivent Financial for Lutherans
 (Board Treasurer 2006 – 2007)

Glen D. Nelson, M.D. (2001)
 GDN Holdings
 Former Vice Chairman, Medtronic

Mary Nichols (2007)
 Dean, College of Continuing Education,
 University of Minnesota
 (Elected 10/25/07)

Michael O'Keefe (1999)
 President, Minneapolis College of Art
 and Design

David J. Olderman (2003)

Richard B. Payne, Jr. (2007)
 Vice Chairman, Corporate Banking,
 U.S. Bancorp
 (Elected 10/25/07)

James J. Phelps (2002)
 President, Northcrest Corporation

Addison (Tad) Piper (1986–1995) (1999)
 Retired Vice-Chairman,
 Piper Jaffray Companies

Paul Reyelts (2002)
 Executive Vice President Finance
 and CFO, The Valspar Corporation

Steven M. Rothschild (1987 – 2005) (2006)
 Chair and Founder, Twin Cities RISE!

David R. Strand (1997)
 Chief Emerging Businesses Officer,
 Cleveland Clinic Foundation
 (Vice Chair 2007)

Austin P. Sullivan, Jr. (1999)

Dr. Richard L. Torgerson (2005)
 President, Luther College

Sharon Winslow (1999 – 2007)

Life Trustees

Thomas R. McBurney

William Pearce

Robert J. Sivertsen

Joanne Von Blon

Staff Officers (as of October 25, 2007)

William H. Kling
 President and CEO
 American Public Media Group

Thomas J. Kigin
 Executive Vice President,
 CAO and General Counsel

Jon R. McTaggart
 Senior Vice President and COO

Mark E. Alfuth
 Senior Vice President and CFO

Jon K. Gossett
 Senior Vice President, Development

Jana V. Kanyadan
 Senior Vice President,
 Technology and CIO

Sarah S. Lutman
 Senior Vice President,
 Content and Media

Mary Nease
 Senior Vice President,
 Human Resources

Timothy T. Roesler
 Senior Vice President, Sales,
 Marketing and Distribution

J.J. Yore
 Vice President and Executive Producer,
 Marketplace Programming,
 American Public Media – Los Angeles

“Public Insight Journalism is a sophisticated attempt to seek the wisdom of the crowd and channel that wisdom back into the news coverage. When done successfully, it improves journalism.”

Gary Kebbel, John S. and James L. Knight Foundation journalism program officer upon awarding the first Knight News Innovation EPpy